

FileList+ User's Manual

"FileList+" Version 1.0b21 1 February 1992 Macintosh File System Database Management Utility

TABLE OF CONTENTS

Distribution and Response Information	1	Rename Volume(s) (cmd-R)	27
FileList+ Features-----	2	FILES MENU-----	28
ABOUT THIS MANUAL-----	2	Compare [Selected] File Versions	28
TERMINOLOGY-----	3	Custom [Selected] File Matching	28
So What is FileList+?-----	3	Match Preferences... (cmd-opt-M)	29
GENESIS-----	4	File Filter Options...	30
BASIC OPERATION-----	4	Reset Match Flags	31
FUNCTION DESCRIPTIONS-----	6	Delete Selected Files... (delete key)	32
Database Functions-----	6	Delete Files Special...	32
File Compare and Mark Functions-----	6	SORT MENU-----	33
Compare File Versions Function-----	7	Files by selected (& last)	33
Custom File Match Function-----	9	Files by name (cmd-1)	33
File Filter Function-----	10	Files by match flags (& last)	33
"Special" Functions-----	11	Files by version and name	33
User Interface Functions-----	12	Files by type (& last) (cmd-4)	34
Field Display and Sort	12	Files by creator (& last)	34
Record Selection	12	Files by size (cmd-2)	34
Constrain Function	13	Files by created	34
Dialog Control	13	Files by modified	34
Selection Groups-----	14	Files by volume (& last)	34
Find Function-----	16	Files by path (& last)	34
Options Saving-----	17	Files by match index, flags (& last)	34
MENU ITEM DESCRIPTIONS-----	19	Volumes by selected	34
FILE MENU-----	19	Volumes by name/free/files/created/modified	34
New (cmd-N)	19	SELECT MENU-----	35
Open... (cmd-O)	19	Move to Pointer (return key)	35
Merge File...	19	Select All Records (cmd-A)	35
Save (cmd-S)	19	Select Files Special...	35
Save As... (cmd-option-S)	20	Swap Present Group & Group A/B	35
Save As Old Format	20	Pop Last Selection Group	35
Save [Selected] Text (cmd-[shift]-E)	20	Push & Get Next Selection Group	35
Page Setup...	20	Push Present Group & Clear	36
Print All[/Selected]... (cmd-[shift]-P)	20	Toggle Present Selection	36
Print Special... (cmd-opt-P)	20	Present = Pres OR Last, Shift	36
Quit (cmd-Q)	20	Present = Pres AND Last, Shift	36
EDIT MENU-----	21	Reset Stack Selection Groups	36
Undo/Undelete Files (cmd-Z)	21	OPTIONS MENU-----	37
Cut (cmd-X or F2)	21	General Options... (cmd-U)	37
Copy (cmd-C or F3)	21	Modifier Key Options...	38
Paste (cmd-V or F4)	21	Memory Options... (cmd-option-U)	39
Clear (cmd-V)	21	Display Options... (cmd-D)	39
Show/Hide Find Controls (cmd-F)	21	Options Sets	41
Find Again (cmd-G)	21	Save Options...	41
Find Previous (cmd-B)	22	Delete Options...	41
Find First	22	Status Font Size	41
Find All (cmd-L)	22	Printer Font	41
VOLUMES MENU-----	22	Printer Font Size	41
Scan Volume(s)... (^)	23	Default Windows	41
Scan All Volumes	24	Stack Windows	41
Scan Folder... (~)	24	Tile Windows	41
Automatic Scan/Eject	24	Reset Options to Defaults	41
Don't Eject after Auto-Scan	24	TIPS FOR USING FILELIST+-----	42
Replace Volumes w/same Name	25	COMPATIBILITY-----	42
Filter Files on Scan...	25	HP DeskWriter	42
Scan Options... (cmd-opt-M)	26	Change History-----	43
Delete Volume(s) (delete key)	27		

FileList+ User's Manual

Distribution and Response Information

First, the legalese stuff!

I reserve all rights to the portions of the program that were written by myself.

You may NOT sell FileList+, or include FileList+ with anything else you sell without my permission. You may GIVE FileList+ away, but only in the same condition I distribute it, **with all documentation files including the User's Manual**. Don't change, modify or edit anything, except on copies you do not distribute. There is NO expiration date or other limitation built into this version. Bulletin Board Systems, including commercial BBS' such as CompuServe, and Non-Profit user's groups, such as BCS and BMUG, may distribute FileList+. Shareware distributing companies may NOT distribute FileList+ without my written permission.

FileList+ does not come with any warranty at all. No liability is assumed for any use that is made of this program. Nevertheless, even if liability is found to exist, it shall not exceed the sum paid to the author.

Apple®, the Apple logo, Appletalk®, ImageWriter®, LaserWriter® and Macintosh® are registered trademarks, and MultiFinder™ is a trademark, of Apple Computer, Inc. Microsoft® is a registered trademark of Microsoft Corporation. StuffIt™ is a trademark of Raymond Lau and Aladdin Systems, Inc.

FileList+ is **GRACEWARE**. If you use FileList+, like it, and want to encourage more of the same, then send me some fraction of what it's worth to you, or whatever you can afford (whichever is less). If you don't like it or just don't want to pay for it, I'm not going to try to give you a guilt trip - PLEASE use it with a clear conscience! Maybe someday you'll find it to be more valuable than it is to you today, or maybe you'll inherit a million! I wrote the program to save myself and others time and money and if you should find it useful enough to be worth paying for, great! I will continue to issue the latest version through bulletin board systems (America Online and CompuServe). If you want me to send you the latest version of FileList+, send me an 800K or 400K floppy with an stamped mailer and I will be glad to send it to you. Please let me know if you want the last release or want to wait for the next one (if one is coming). If you donate \$5 or more, I'll spring for the floppy, mailer, and postage and send you the latest, providing you request it.

The only minimum payment I request is your comments, even if you don't encounter any problems! I'd appreciate any comments, ideas, questions, or bug reports you have on **FileList+**. Let me know HOW you are using the program and what version you have. If you're reporting bugs, I'll need to know your basic configuration, software (**FileList+** version, System version, INITs with versions, etc.) and hardware (Mac model, disk types etc.). Here are the suggested means to reach me:

- leave a message for me on one of the following Bulletin Board Systems:
 - BillPatt on America Online (preferred)
 - CompuServe : 70761,3407 Internet : 70761,3407@compuserve.com
 - Bill Patterson on MacShack BBS (214-644-4781) of Dallas
 - Bill Patterson on MacCircles BBS (415-484-3281)

• or, send Mail to: **Bill Patterson**
 805 Division St.
 Greenville, TX 75401

IF you wish me to reply by mail, please include a self-addressed, stamped envelope. If you need me to send you some files, include an 800K or 400K formatted floppy with mailer and postage.

Erny Tontlinger, the author of the original FileList that **FileList+** was derived from, may be reached by the addresses shown below. Please note that **FileList+** was created with no collaboration from Erny, so don't ask him about **FileList+** specifics.

CompuServe : 73720,2200 Internet : 73720.2200@compuserve.com
Packet Radio: LX1YZ @ LX0PAC

Erny Tontlinger, 33 route d'Arlon, L-8410 Steinfort, Luxembourg

FileList+ User's Manual

FileList+ Features

FileList+ is a powerful and flexible disk management application for the Apple Macintosh. It is designed to make it easier to keep track of large numbers of files. It incorporates many database tools to make this possible. If you are unfamiliar with FileList+, I recommend that you at least read the BASIC OPERATION section and scan the FUNCTION DESCRIPTIONS sections of this manual to acquaint yourself with what FileList+ can do and how it does it. System 7 users may be happy to know that FileList+ includes Balloon Help.

Some of the features found in FileList+ are listed below.

- Fast and easy-to-use offline search, sort and database functions built in
- Separate lists of files and volumes
- Four scanning options: scanning of up to 16 individually selected volumes at a time, all online volumes (up to 40!), or automatic scan of each volume as it is mounted
- Scanned data includes all Finder information and Version information
- Contents of Stuffit™ and Compactor archives read and treated like folders
- All data is memory resident, making manipulation of data extremely quick
- Display of data fields in each list are user configurable, including sequence
- Data fields are automatically resized to accommodate largest value, minimize wasted screen space
- Sort by any field with a single click, in ascending or descending order
- Powerful dual-field sorts for most file data fields
- Statistics may be displayed at the top in each list, including sizes of selected items, length of list
- File may be delete from within FileList+, useful for removing duplicate or obsolete files
- Volumes without unique names in current list may be renamed when scanned
- Flexible duplicate file search function, automatic or full manual selection of match criteria, indication of version relationships (older/newer or same)
- File Filter for scan, compare, delete, selection, and print functions, including filter by file Type, Creator, size, and dates. For example, one File Filter option selects all executable type files.
- Database Management functions include functions to perform boolean selection functions, delete, sort, and relate records
- Data export options include Text File output, Clipboard, and flexible printing options
- Flexible **Text Export options** to output field text as it is displayed or using a fixed format, with spaces or a tab character between fields, can output a "clickable" database for any database, spreadsheet or word processing application
- Balloon Help (System 7 only)
- Powerful user interface with many shortcuts, automatic functions, and progress indicators
- Extensive, explicit error messages
- Reads and writes (optionally) files compatible with original FileList
- File lists may be merged together, **Automatic merge** when multiple files opened together
- Many user configurable options
- Multiple configurations may saved for performing different types of operations

ABOUT THIS MANUAL

Basic operations, followed by major **FileList+** functions are described separately in detail, followed by a section for each menu item. All options shown in example figures are the default options, unless otherwise indicated.

When printing this User's Manual in Word™ with a Postscript printer, to get this printed correctly make sure FONT SUBSTITUTION is enabled, and FRACTIONAL WIDTHS is not.

FileList+ User's Manual

TERMINOLOGY

To clear up some possible confusion with terms, a "Volume" may be a disk, a network volume, or a partition of a disk. Anything that acts like a disk can be scanned by FileList+ and is treated as a volume. "Eject" refers to removing a volume or disk from the desktop. "Mount" in reference to a disk is equivalent to inserting the disk or placing it online.

So What is FileList+?

In short, **FileList+** is a blazing fast file and disk organizer, with powerful offline file search and sort capabilities. But that's just the beginning of what **FileList+** is!

FileList+ reads entire volumes for file information then lists and saves the volume and file information it collects. There is an option that enables "Stuffit" (Classic and Deluxe) and/or "Compactor" archives to be opened and to be treated like a folder: all files in the archive (including encrypted entries) will be listed. Selected folders may also be scanned.

The collected information may be viewed, sorted by multiple criteria, searched for, saved as text files (to be printed later on, or to be imported into other applications such as spreadsheets and databases). Entire volumes may be deleted from a list or renamed. There is an automatic disk insert/eject mode, meaning any inserted disk (be it a floppy, cartridge, or CD-ROM disk) gets scanned then ejected, or any mounted volume can be added by selecting from a list of on-line volumes.

FileList+ is especially useful for managing LARGE quantities of files, on one or many disks. It can be used to quickly locate files. Others uses **FileList+** offers include the elimination of file duplications and conformation of file backups. **FileList+** can perform a comparison of the files to detect duplicate files or to detect files that are different versions of other files, such as older or newer versions of the same application.

As an example of how you might use **FileList+**, let's suppose you wish to determine if your hard disk(s) and/or floppies contain duplicates of certain files, then delete the duplicates. To do this, first scan the online disks by bringing up **FileList+**, selecting the Scan Volume(s)... menu item under Volumes menu and selecting the volume(s) you wish to scan by clicking on the disk icons associated with them, then click on the Scan button to perform the scan. After this is completed, for the disks to be scanned that are not mounted, mount them (with **FileList+** active) and they will be scanned automatically. Once all desired volumes have been scanned, select the Compare File Versions menu item under the Files menu (command-m) and click OK after selecting your preferences for the comparison. **FileList+** will process the files in the list, comparing them and marking them as to which files are duplicates of other files (with combinations of "•" and "m" flags) and which are older or newer versions of other files (with "o" and "n" flags). **FileList+** will then sort the files list by Match Index to group the files together that are related. The list may now be saved or printed. To delete the duplicates, carefully select the ones you wish to delete by clicking on the records, holding down the shift key to select more than one at a time. When you have selected all the files you wish to delete, hit the "delete" key. Answer "Disk Files" to the next dialog, then say "Yes" when it asks to confirm the deletion. The files you have selected are now deleted.

This is just a small part of what **FileList+** is. Many options are available for the Scan, Match, Select and Delete operations. Read on for more information.

FileList+ User's Manual

GENESIS

Here is what "MacUser" December 1989 said about "FileList 1.2": "FileList is a basic but very effective file lister. Insert a disk, and its contents are quickly listed with volume and folder paths, size, dates, creator and type. The resultant file can be printed, edited, or exported as text. The data transfers well to databases. FileList is currently the best of this type of program available."

FileList+ is an extremely enhanced version of FileList (version 1.4). The original *FileList* is from Erny Tontlinger. The standard features of the original *FileList* are completely intact. If you are a previous user of *FileList*, you will be happy to know that **FileList+** reads and can write files compatible with the original *FileList*.

FileList+ was developed with Think™ C Version 5.0 and every attempt has been made to adhere strictly to Inside Macintosh guidelines. It has been tested under Systems 6.0.5, 6.0.7, 7.0 and 7.01•, but should work under any version after 6.0.0, on any Macintosh model. HFS (Hierarchical File System) is required, but MFS (Macintosh File System) disks are supported. The more memory allocated to FileList+, the more files it can accommodate, but 384K is sufficient for most users.

The detailed changes made in this version of **FileList+** may be found in the section named "Version History" below. A more complete list may be found in the separate "FileList+ Revision History" file.

BASIC OPERATION

FileList+ always maintains two windows: a Volume list window and a File list window. The title of each window shows how many entries are in the each list. The windows can be moved around, resized and zoomed. Clicking in the active window's close box sends the window to the background, activating the other window. The window positions and sizes can be saved with the other options.

The screenshot shows two windows from the FileList+ application. The top window, titled "User's Manual Example" 7 Files, displays a file list with the following data:

FILE NAME	MTCH	VERSION	TYPE	CREA	BYTES	CREATED	MO
StartUp Manager	n	3.0.1	cdev	NWin	82193	09/21/91 11:48:20	10
StartUp Manager	o	3.0	cdev	NWin	137033	11/16/91 03:30:54	11
SuperDisk!	•	1.7.3	⊗1991	cdev	AluS	96227 07/21/91 11:48:20	07
SuperDisk!	m	1.7.3	⊗1991	cdev	AluS	96227 07/21/91 11:48:20	07
After Dark	n	2.0v	cdev	ADrk	101193	04/09/91 16:52:04	12
After Dark	o	2.0u	cdev	ADrk	101202	09/27/90 18:06:43	11
StartUp Manager CP			cdev	NWin	574	12/11/91 00:06:31	12

The bottom window, titled "User's Manual Example" 2 Volumes, displays a volume list with the following data:

VOLUME NAME	FREE	TOTAL	FILES	CREATED	MODIFIED
Hobbes	6,994K	33,965K	750	08/12/91 21:51:38	01/05/92
Hobbes, Appl/Util	1,648K	42,516K	1161	11/16/91 03:30:54	01/05/92

Annotations in the image point to "FIND CONTROLS" (the search options), "FIELD HEADER" (the column headers), and "SELECTION MARKS" (the diamond characters in the first column).

Each volume or file entry is displayed on a separate line or "record". A record may be selected by clicking on it. Clicking on a selected record deselects the record. The "Copy" menu item (or function key F3) copies the selected record to the clipboard as text. Selected records are indicated with a diamond character in the first column.

Each displayed field is shown in a separate column, headed by the field name. Fields may be rearranged by dragging the field names.

FileList+ User's Manual

The scroll bars can be used to move around in the list as expected. The following keyboard keys can also be used to navigate:

home	Scroll to beginning of list
end	Scroll to end of list
page up	Scroll one page up
page down	Scroll one page down
cursor keys	Scroll one line up/down or column left/right (use the option key to scroll one page left/right)
return	Move to last selection made (cursor position)
enter	Move to next selection

This is just the beginning of what you can do with **FileList+**. Read on for more details.

FUNCTION DESCRIPTIONS

Database Functions

One of the objectives in **FileList+** is to perform common database management functions within the program, much faster and more conveniently than can be performed through exporting the data to a separate database or spreadsheet application. The following functions comprise the primary "Database Management" operations of **FileList+**:

- Matching (Compare) Functions
- Sort Functions
- Filter Functions (for scan, delete, print, select, match, etc.)
- Delete File Records Function
- Record Selection Functions with Boolean operators

File Compare and Mark Functions

FileList+ has two "Match" functions that compare files in the list against each other and mark them according to the results. **Compare File Versions** performs "intelligent" comparisons of each file, discriminating executable files from document files. **Custom File Match** performs the same user selected comparisons for each file.

Some example uses of these functions are:

- identifying duplication of files to save disk space
- identifying files without backups
- identifying files with multiple versions (indicating older/newer of pairs)
- performing an audit of files of certain types, such as applications, INITs, etc.
- resolving multiple copies of a disk that were modified simultaneously
- comparing a disk with backups to detect changed files

Generally, the Compare File Versions function is more useful, as it gives additional information as to older or newer versions, as well as identifying exact matches.

Several operations and features apply to both match functions and are described here. The items that are unique to each of the Match functions are described separately below.

Each file record has a field with four "flags" or markers that may be found in the Match field ("MTCH") as shown in the partial list example in the "Basic Operation" section above. These markers are used to indicate files that have matches and those that are older or newer than other versions of the same file. The table below indicates the meanings of these flags. Note that the Match field is not displayed if NO flags are set for any file record.

Flags	Meaning
•	the first match of a matching file set
m	the second match of a matching file set
•m	the third or later match of a matching file set
o	this file is older than another file found to be a different version of the same original file
n	this file is newer than another file found to be a different version of the same original file
on	this file is newer than one file found to be a different version of the same original file, and older than another
• on mon •mon	this file is either older, newer, <i>and</i> the match of other files, or , the size is different but all other fields are the same as at least one other file

Each Matching function clears all match flags initially.

FileList+ User's Manual

Normally, each file record to be compared must pass the File Filter. However, each of the match functions may be constrained to operate only on file records that are currently selected by holding down the shift key when selecting the menu item (the menu item title will change). If this is done, the File Filter is ignored and instead it is required that at least one record of each comparison pair is selected. This can be used for only comparing certain files of interest in your list, for example, your System Folder files.

The match criteria are selectable via the Match Preferences... menu item in the Files Menu. The "Match Files when Volumes are:" options select the required relationship between files considered to be matched or compared. "Different" will ensure that a comparison will not be made unless the files are on two different volumes, to distinguish files that have backups. "Same" is the reverse, comparison may only occur only when the two files are on the same volume. Selecting "Don't Care" allows comparisons for either case. See the menu item description for more information on Match Preferences...

If the Only One Match option is selected in Match Preferences, then multiple matches ("*m") will never be indicated, and once a file has been matched once, it will not be compared for further matches.

After either match function has been performed, if the Files list was not previously sorted, it will be sorted by the Match Index and File Type field. This will automatically group together the files that were found to be related or duplicates of one another. The header will highlight the "MTCH" field.

Note that all string comparisons performed for matching (name, volume or path fields) are case sensitive. For example file name "abcd" would not be considered to match file "ABCD" even though both would be considered the same name for most purposes on the Macintosh.

Compare File Versions Function

The Compare File Versions function performs a "smart" comparison of all files in the list, indicating files that are "exact" matches, as well as those that are older or newer versions of the same file. **Executable** files are discriminated from **documents** and the comparisons are tailored to reflect this.

If the Match Preferences "Create Log" item has been selected, a **Log file** will be created detailing which files need to be moved from where to where to update all volumes to contain the latest versions of each file. If you cancel the Log file Save dialog, the comparisons will be still be performed, but no Log file will be created. On the other hand, if you specify a Log file, the list will be sorted first by the Path field to organize the files by directory. The Log file will list each file that needs to be moved, with the directory information for the newer and older of the two files. The Log will also list files that have no known matches, and those with more than two versions. It will flag "questionable" files with an asterisk ("*" - See note below).

User selectable criteria for the comparison include the File Filter settings and the Volume settings. The File Filter limits the comparisons to the file types specified (see File Filter Options...). The Volume settings determine whether the comparison should check a file for matches only on the same volume, only on different volumes, or both. This is selectable via the Match Preferences... dialog (see menu item description below). The Match Preferences... dialog will be presented when this function is first performed if the Match Preferences... has not been selected since program start-up or the last list file loaded.

Additional features of the Compare File Versions function that also common to the Custom File Match function are described above in the "File Compare and Mark Functions" section.

FileList+ User's Manual

In performing each file comparison, the program first determines if a file is an executable-type file or a document-type file. **Executable** files are those with specific file Types including applications, INITs, control panel devices, system files and the like. All other files are considered to be **document** type files. (Note: the definition of executable files here is the same as that used in the File Filter).

If a file is a **document** type file, the program compares it with the other files in the list, looking for exact matches on the file Names, Types, Creators (making sure the files belong to the same application), and create date. If a match is found for each of these fields, the modify dates and times of the two documents are compared. If they are identical, a match is indicated for the first file with a “•” and for the second file with an “m”. If a match is detected and the file has been previously matched or this is the third or later matching file in this series, a multiple match will be indicated with both (“•m”). If the files don't match exactly, the older of the two files is marked with an “o” and the newer is marked with an “n”. If Names, Types, Creators and dates match, but file Sizes don't, the “•”, “n” and “o” flags will all be set for both files to highlight this incongruity. To summarize:

FIELD	COMPARISON PERFORMED
Name	exact
Type	exact
Creator	exact
Size	exact (flag if only difference)
Create Date	exact
Modify Date	used to set older/new or match if exact

If a file is found to be an **executable** type file, the program compares it with the other files in the list, looking for exact matches on the file Type and Creator, and an optional partial match on the files name. If the Match Preferences option “Ignore Names of Executables” is enabled, the names of **executable** type files are disregarded for this function. Otherwise, the name comparison performed is the same as that done for the Custom Match option “up to numeric”, i.e. each name is truncated beginning at the first non-space character preceding the first numeric character (if found) before comparing. For example, “MacDraw II 1.1” and “MacDraw II 1.0v2” would be compared as “MacDraw II” and would match. If a match is found in all three fields, the comparison continues by checking file for version information. If both files have a version number, this is used to compare the files. If one or both of the files has no version number information, the create dates and times of the two files are compared. If the version numbers (or create dates if version data not found) are identical, a match is indicated for the first file with a “•” and for the second file with an “m”. If not, the older (earlier date or smaller number) of the two files is marked with an “o” and the newer is marked with an “n”. If a match is detected and the file has been previously matched or this is the third or later matching file in this series, a multiple match will be indicated with both (“•m”). To summarize:

FIELD	COMPARISON PERFORMED
Name	compare truncated or ignore
Type	exact
Creator	exact
Size	within 1 Kbyte of each other
Version	used to set older/new or match if exact
Create Date	used if version info absent
Modify Date	ignored

NOTE: Because version number information is more reliable than the date information for determining the version of an executable type file, it is strongly recommended that you select the “Get Version Information” option in the “Scan Options...” menu item for use in comparing file versions. This item is by default deselected to enhance speed of disk scans. If enabled, the version information is normally obtained from the resource “VERS” in the executable file. In older, and some newer applications, this resource is not present or is not of the Apple specified format. See Disclaimer below for more information.

FileList+ User's Manual

All files listed in the Log whose comparison was based on dates (as opposed to version numbers) will be marked with an asterisk (“*”) to warn you about the information in the disclaimer below.

COMPARISONS DISCLAIMER:

Note that all file date/time information is only as accurate as the clock on the system. If the clock is improperly set, the date/time stamp for files will be also, and comparisons of files from two different systems must take this into account. Also, just because a file has a newer date/time does not mean the data contained therein is necessarily newer. For example, if one opens up a copy of a file to look at it and saves it just to be cautious, even though the copy originally had been older, it would now indicate itself to be newer. The solution to this is to not save files unnecessarily.

Another problem case is executable files that retain their create date and time through several versions. Examples of this are the SuperClock! and Boomerang INITs. Since executable files are often self-modifying also, there is no way to infallibly discern the truly older/newer of two files of this type, except possibly through the version number. If one or more of the two files has no version number information, for whatever reason, the comparison is may be faulty. Therefore, **please bear these items in mind before following the recommendations of the Log file!**

Custom File Match Function

The Custom File Match function compares files by user selected fields and other criteria. When two files pass all selected criteria and the selected fields for the two files are identical, **FileList+** marks the first of each matching file set with a bullet (“•”) and the second matching file with an “m” in the “MTCH” field. File matches after the first match pair are marked with both (“•m”). The definition of a “match” is user selectable. NOTE: The older and newer flags are cleared but not set by the Custom Match function.

Match criteria for Custom File Matching are selectable via the Match Preferences... dialog. These criteria include each file field such as Name, Size, etc and are described later under that menu item. If the Name item is enabled and the option **Ignore Names of Executables** is enabled, files with executable file Types will not be tested for matching names, unless they don't have the same file Types.

The File Filter may be selected via the “File Filter Options...” menu item, also described below.

Additional features of the Custom File Match function that also common to the Compare File Versions function are described above in the “File Compare and Mark Functions” section.

For instance, let's say you have a list of files and select the “Custom File Matching” menu item. **FileList+** will perform the following:

- 1) Reset match flags for each file record.
- 2) Select the first file in the list that passes as matchable.
- 3) Compare it with each subsequent file that passes as matchable, comparing those fields selected in the Match Preferences dialog. If a matching file is found, mark the first file with a bullet, second with an “m” in the match flags field “MTCH”.
- 4) Using the same “first” file, continue the search for comparable files until the end of the list. If subsequent matches are found, those files are marked with a bullet and an “m”.
- 5) Select the next “matchable” file in the list is selected and go to step 3 unless the end of the list found.

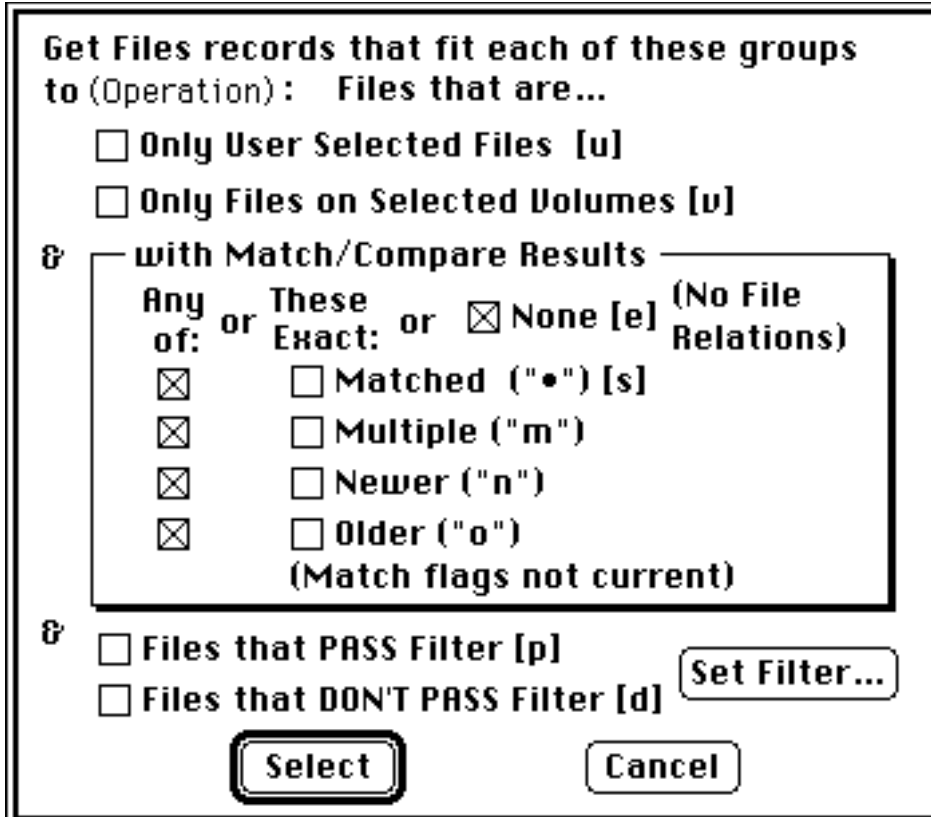
If the **One Match per File** option is enabled in Match Preferences, step 4 above will be skipped.

File Filter Function

The File Filter function allows you to optionally select only files with certain characteristics for the purpose of selectively scanning, printing, deleting, selecting, or matching these files. The File Filter criteria include number of commonly used file types, two custom file types, a minimum size, and create and modify date ranges. When you select the Print, Delete, and Select "Special" menu items you have the option of selecting all files that pass the filter, or those that don't, together with various combinations of matched files via the standard "Select Groups" dialog described in the "Special" Functions section.

"Special" Functions

The Print, Delete, and Select *file* operations are also available as "Special" menu items, such as "Print Special". The "Special" menu item allows you to perform the operation on a subset of the files in the list by selecting "groups" of files from a standard "Select Groups" dialog used for each of these menu items, an example of which is shown below where "(Operation)" is Print, Delete or Select.



Each selection criteria "group" excludes more files when it is selected, except the Match/Compare Results section.

Within the **Match/Compare Results** group, there are two columns. The first column ("Any Of:") may be used to include files that have any one or more of the selected match flags. The second column ("These Exact:") additionally includes only those files that have exactly the flags selected and no others. The **None** item additionally includes those records that have no match flags set. Setting all "Any Of:" flags and **None** will include all files regardless of their match flags, excluding only those files that do not pass the other criteria.

If the match function has not been performed or is not up-to-date, a message will indicate this below the match flag items (as shown in example above).

Selecting **Only User Selected Files** will exclude those files that have not been selected. (Not available for the Select Special menu item.)

Selecting **Only Files on Selected Volumes** will exclude those files that are on volumes that have not been selected.

Clicking on the **Set Filter...** button will bring up the File Filter Options dialog. The File Filter may be used to include or exclude files based on their passing the filter. If the **Files that PASS the Filter** option is selected, then files that **don't** pass the filter will be excluded. If the **Files that DON'T PASS the Filter** option is selected, then files that **do** pass the filter will be excluded. If both or neither of these items is selected, then the Filter is ignored.

For example, if Any of Matched Files, Multiple Match Files and Files that PASS Filter are selected, only files that are either matched OR multiple matched and pass the File Filter will be printed. Since the "Only User Selected Files" and "Only Files on Selected Volumes" options were not selected, these two criteria are ignored.

User Interface Functions

The list windows and dialogs of **FileList+** have numerous control features not directly evident. Many of these make use of modifier keys held down while the mouse is clicked on an item to perform special operations. The functions of modifier key combinations are user selectable via the General Options... menu item, the default keys are indicated in the descriptions below. The next several sections describe many of these control features.

Field Display and Sort

Each list window has a functional header bar (where the field names are) that may be used to select the fields sequence, sorting criteria, and displayed fields. To sort on a list by a particular field, click in the header bar for that field. To sort in reverse order, hold down the shift key (Reverse Sort modifier) when clicking (or when selecting the menu item correspondingly).

FILE NAME	MTCH	VERSION	TYPE
-----------	------	---------	------

The header of each window will indicate the field(s), if any, that the list shown is sorted by inverse video display of the text, so that the text has a white background, as shown for the "MTCH" field above. If it is sorted by two fields, one as primary and the other as secondary, the **primary** field will be marked with a small "tab" in the bottom left corner of that field (as shown above).

To rearrange the sequence that fields are displayed, click and drag the header of the field where you want to move it. The sequences of fields in each window will be saved for the next session of **FileList+** if you do a Save from any options dialog.

The files window is user configurable as to *which* fields are displayed. Display options are available via a menu item. In addition, you may hide a field by clicking on the header for that field with the command key (Hide Field modifier) down.

The sequence and display of fields may be restored to their "factory" default states by clicking in the header bar of the window and clicking with any combination of modifier keys that includes both command and options keys (the Restore Fields modifiers).

The table below summarizes the actions that may be performed with the cursor in the field header of a window:

Modifier Keys	Default Keys/Action	Result
<i>none</i>	click	sort by that field (ascending order)
<i>none</i>	click-drag	move field
Hide Field	command-click	hide this field
Reverse Sort	shift-click	reverse order sort by that field
Restore Fields	command-option-click	restore defaults to field display

Record Selection

Records may be selected by clicking on them, and deselected by clicking again. Selections are indicated with a diamond symbol in the left-most column. All previous selections are cleared first unless the shift key (Extend Selection modifier) is held down while clicking, in which case the selection will be extended to include those items clicked. Hold down the shift key (Extend Selection modifier) while dragging over several records will result in each of those records being set to the opposite selection state of the first record clicked. Dragging past the top or bottom of the window will cause an automatic scroll to be performed.

The next selected record may be viewed by hitting the Enter key. A couple of example uses are jumping back to a certain record after performing a sort, or for viewing each search match in the list after performing a Find All or Select Special operation.

The Return key will move the scroll position to the last record clicked or selected.

Clicking on a Volume record with the Command, a.k.a. Apple key (Select Files in Parent modifier) down will select/deselect all the file records for that volume, without changing other previously selected files.

FileList+ User's Manual

Clicking on a File record with the Command key (Select Files in Parent modifier) down will select all the file records that are in the same folder as the record being clicked, including sub-folders. For example, holding down the command key and clicking on the System file's record in the Files window will select all files that are in the System folder and it's subfolders.

Clicking on a File record with the Command key (Select Files in Parent modifier) and Option key (Select Files in 2nd Parent modifier) down will select all the file records that are in the same folder as the folder containing the record being clicked, including sub-folders. For example, holding down the command key and clicking on the System file's record in the Files window will select all files that are in the folder/volume that contains the System folder and it's subfolders.

Clicking in certain fields of a record with the Option key (Copy field to Search modifier) down will copy the contents of that field to the appropriate search parameter. This works for the Name field in both windows, and also the Type and Creator fields in the Files window. This is useful for quickly finding other records in the list with the same values for the selected field.

The table below summarizes the actions that may be performed when clicking in the list section of a window:

Modifier Keys	Default Keys/Action	Result
<i>none</i>	click	select or deselect a record, clearing previous selections (selection indicated with diamond symbol)
Extend Selection	shift-click	select or deselect a record without effecting selection of other records
Extend Selection	shift-click-drag	select multiple contiguous records
<i>none</i>	option-click	copy field data to search parameter
Select Files in Parent Folder	command-click	select all files in the same folder as the file record clicked OR select all files in the volume record clicked
Select Files in 2nd Parent Folder	command-option-click	select all files in the same folder as the parent folder of the record clicked
<i>none</i>	enter	move scroll position to next selected record
<i>none</i>	return	move scroll position to most recently selected record
Copy field to Search	option-click	copy field data to search parameter

Constrain Function

For menu items, the shift key is used to constrain many file operations to operate on selected file records only (This item is not configurable). The menu item title will change, indicating that the constraint is activated.

Dialog Control

Most **FileList+** dialogs can use keyboard characters to select items, as well as command-a to toggle or select a group of items. Usually the first character of the item is the character to use to select that item. In cases of duplication, an alternate character is shown in brackets in the items description. Command keys can be used the same as un-modified keys in most dialogs without editable fields. Dialogs with editable fields will only respond to command-key commands. When editing text fields you may make use of edit commands such as Copy and Paste.

Selection Groups

Selection Group functions are designed for complex manipulations of the list. Except for the Toggle Selections menu item, these functions are for advanced users only.

Each file and volume list record has a set of bit-fields that indicate if this record belongs to a particular Selection Group. These fields may be set, cleared, combined, rotated, and otherwise manipulated with commands in the Select Menu. The "present" Selection Group is always the one whose members are indicated under the diamond header item with a diamond symbol indicating a record is selected. The "last" Selection Group was once the present Selection Group that has been "pushed" up the "stack" of Selection Groups. Selection Groups may be formed to perform the following operations on the selected records: Print, Save Text, Delete (Files or Volumes), Rename, and Copy (to clipboard), as well as Custom File Match and Compare File Versions. The Copy, Delete, and Rename operations are always performed on the present Selection Group. Certain other operations are constrained to operate on the present Selection Group by holding down the shift key when selecting those menu items.

There are up to five sets of Selection Groups for each list. These groups may be manipulated using the commands in the Select menu.

The statistics for the present Selection Group, as well as the orientation of any other selection groups, may be found in the second line of the Statistics at the top of each window (if enabled, see Display Options), as well as the second line of the header of a print out. Information that is displayed includes:

- a count of records in the present Selection Group
- a byte count of the combined sizes of the selected record items
- in the Volumes window, a byte count of the combined free sizes of the selected volumes
- the number of the present Selection Group
- the positions of the other Selection Groups in the Selection Stack

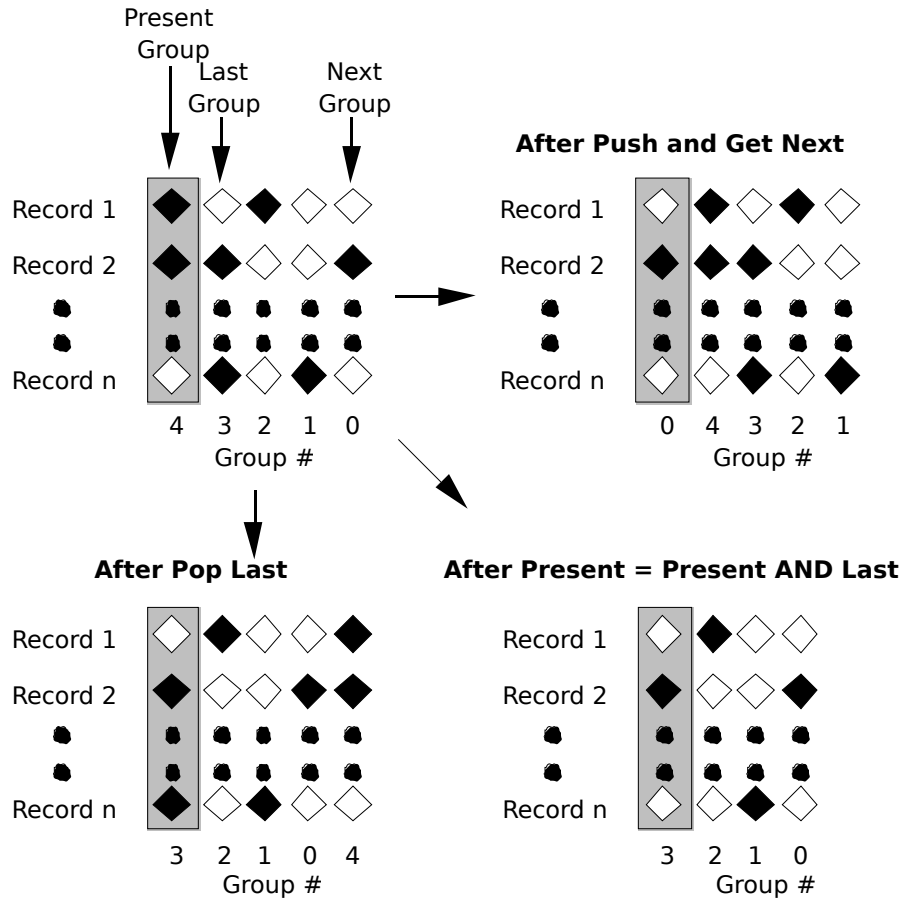
Several Boolean operations may be performed between the present Selection Group and the last Selection Group. These include logical AND and OR operations. Another Boolean operation toggles the selection status for each record.

There are several methods that may be used to select records. The first is manually, via clicking on the record. Holding down the shift key (Extend Selection modifier) while simultaneously holding the mouse button down and clicking or dragging the cursor over the list will add to the previous selection(s). The Find All function will push the present Selection Group onto the stack (where it becomes the "last" Selection Group) shifting the other Selection Groups, clear all selections, then set the select flag for all records that match the search parameters. These first two steps are also performed with the Push Present Group & Clear menu item. The Select All function will set the select flag for all records in the active window. The Select Special function will select file records from user specified groups such as those that pass the File Filter, have match flags set, etc.

In addition to the five selection groups in the selection stack, there are two groups, Group A and Group B, that are used for semi-permanent storage. You can swap the contents of each with the present selection group. No other operation except Save As Old Format changes these groups.

FileList+ User's Manual

Below is a diagram illustrating the concept of selection groups, the selection stack, and the results of several Selection Group operations. Note the movement of Selection Groups after they are "Pushed", "Popped", and combined with Boolean operations.



FileList+ User's Manual

Find Function

FileList+ has an extremely quick search function for finding and selecting file or volume records of interest. You direct this search by entering text in the search criteria of the **Find Controls** area in the top of each list window. When visible, the Find Controls appear as show in the file list example in the "Basic Operation" section above, after the statistics lines and beside the "FIND". You may make the Find Controls visible or hide them with the menu item Hide/Show Find Controls, the command key equivalent, or with the Display Options menu item. Also, clicking in the Find controls area with the command key (Hide Field modifier) down will cause the controls do be hidden.

In the Files window's Find Controls, there are three editable search criteria. The first is a triple purpose text field that can be used to specify any one of **Name**, **Parent** (folder), or **Volume**, selectable via the pop-up menu item shown with the arrow. This criteria may be used to search any of these fields by part or all of the name. The other two search criteria are file **Type** and file **Creator**. When certain operations are performed, **FileList+** attempts to make an intelligent choice of one of these three criteria. This is called the "**auto-criteria**" selection.

If the **Type** or the **Creator** is not filled out then it is not used. Otherwise it must match exactly (4 characters). You can also use an empty name string and only find files based on the type and creator, or type alone, or creator alone, or any possible combination thereof. For example, to find all application file records, enter "APPL" in the **Type** criteria, nothing in the **Name** and **Creator** criteria, and press Find All. All matching records will be selected.

If no value is entered in ANY of the search criteria for the Files list and the pop-up menu is selected to be **Parent**, performing a **Find Next/Find Previous** will skip to the first record of the next/previous folder. If the pop-up menu item is set to **Volume**, this will cause a skip to the beginning of the next or previous volume.

For both lists you can search by giving part of the name. The radio buttons apply only to the **Name/Parent/Volume** criteria. They specify the possible locations a partial match may be found in the record field. **Begins** means the name/parent/volume must start with the search string. **Ends** does likewise for the end and **Includes** will match the search criteria anywhere. **Equals** indicates the strings must match exactly, no partial strings allowed.

There are several methods available for entering text in a search criteria. Just typing text will automatically begin entering text in the auto-criteria. If the auto-criteria is the Name/Parent/Volume criteria and no characters have been entered for the Delay until Repeat time (set in the "Keyboard" control panel), a Find Next will be performed automatically, searching down from the top of the list. Subsequent keystrokes must occur within the time setting for Delay until Repeat, or they will be interpreted as a new string.

For example, if the list is sorted by the Name field, and the "Begins" option is selected, just entering "fir" would cause the first file whose name begins with "fir" to be selected and displayed.

Another means for entering a search criteria is by clicking on the criteria you wish to edit and typing. Also, entering Tab will select the auto-criteria if no field is selected, and rotate through the criteria on subsequent Tabs. Using this method, **FileList+** will wait for you to enter a command before doing anything with the entered text.

Search is case sensitive for Type and Creator only, which also are restricted to 4-character strings, no more, no less, unless no value is entered. Find First will find the first occurrence of the search strings in the list. Find Next finds the next occurrence, beeping if the end of the list is found before the next occurrence. Find Prev finds the previous occurrence, beeping if the beginning of the list is found before the next occurrence. Both Find Next and Find Prev will wrap around if the ends of the list are found the previous time they are executed. Find All marks all records that match the search parameters. Use the Enter key to step down through the results of a Find All.

Each time a record matching the search parameters is found, that records Selected field will be enabled, indicated with a solid diamond shaped symbol. When a Find All command is executed, the present Selection Group is pushed onto the Selections Stack and the present selections cleared, before the searches are performed.

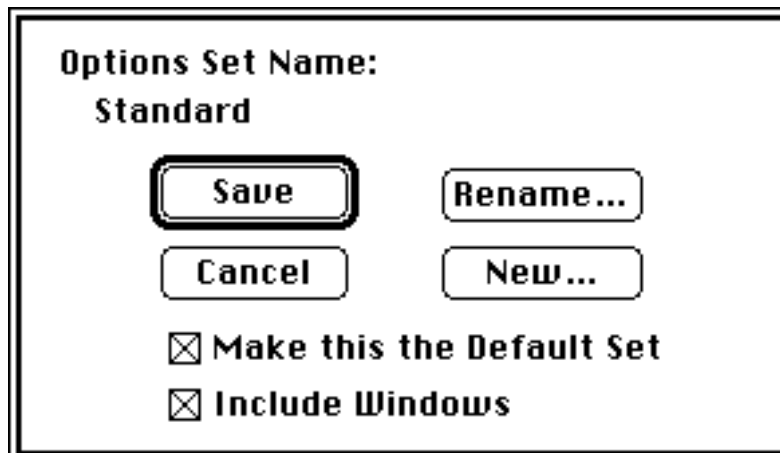
The Find Controls and search function for the Volumes list is nearly identical to the Files list except only one search criteria is available - volume **Name**.

Options Saving

There are two locations that user selected options may be saved. The first is the "FileList+ Options" file (referred to as the Options file), and the second is the List file. Most options are saved only in the Options file, but some are also saved in the List file so that its information can be correlated with the conditions that created it. For example, the Match options and the File Filter options are saved in the List file, so that any file match information may be understood as to how it was created, and so that it may be repeated. In general, all user settings are saved when an Options save is performed. The only exceptions are the selections of file groups made in "special" menu items, and Search Parameters.

Options Sets are a complete set of user selectable options you may save by name in the Options file. Options Sets may be renamed or deleted. Any number of Options Sets may be saved in the Options File. Each Options Set must have a unique name.

Options may be saved in the Options file by selecting the Save... button from any of the Options dialogs or by selecting the Save Options... menu item from the Option menu. The dialog shown below will be displayed:



The default Options Set name "Standard" is assigned when a new Options file is created. Besides the name options may be selected before saving the Options Set. If you wish this Options Set to be the new default Options Set to be loaded at the next launch of **FileList+**, select the **Make this the Default Set** checkbox. If you wish the current window positions and size to override the windows active when this Options Set is later loaded, select the **Include Windows** checkbox. To change the name of the current Options Set, select the **Rename** button and enter the new name. To specify a new Options Set name, select the **New...** button and enter the new name. The Options Set is not actually created or changed until the **Save** button is selected. The current Options Set may be duplicated by selecting it, then performing a Save after selecting a New name.

A search is performed for the Options file at program launch or when an Options Set is selected from the Options Sets menu item under the Options menu. The search is performed in the sequence shown below until the file is found. If an Options file is not found, all options are reset to defaults and you will be warned.

1. Look in the folder that **FileList+** is in. If not found then,
2. Look in "Preferences" folder in active system folder. If folder or file not found then,
3. Look in active system folder.

TIP:

The fact that application's folder is checked for an Options file first is useful for setting up a portable copy of the program using a fixed configuration. To do this, save the options, then copy the "FileList+ Options" file from the "Preferences" folder or active system folder to the application folder. This Options file will then be used whenever this **FileList+** is launched.

FileList+ User's Manual

If the Options file is located at program launch, then the default Options Set is loaded. Subsequently, you may select any other Options Set from the Options Set menu item under the Options menu, and that set of options will be read into memory, overwriting all current options. If the "Include Windows" option was selected when a selected Options Set was saved, the window sizes and positions will be changed as well. The last loaded Options Set is always indicated by the checkmark beside its name in the menu. When a List file is opened, its saved options override the current Match and File Filter options. Options in merged files are ignored.

When the Options file is saved, FileList+ performs the search described above. If none existed, it will attempt to create one in the "Preferences" folder, defaulting to the active system folder that folder is not found. If the "Preferences" folder is found and an Options file previously existed in the active system folder, it will be moved to the Preferences folder, overwriting any Options file found there.

NOTE FOR POWER USERS:

You can use ResEdit to modify the following resources in "FileList+":

- 'STR ' ID 136 File name for storing options.
- 'FL+O' "%Default" Resource that contains the program defaults for all options.

MENU ITEM DESCRIPTIONS

In the descriptions below, menu items shown in brackets (“[]”) indicate the optional “constrained” form of this menu item, selected by holding down the shift key when selecting the menu item.

FILE MENU

File	
New	⌘N
Open...	⌘O
Merge File...	
Close	⌘W
Save	⌘S
Save As...	⌘B
Save As Old Format	
Save Text	⌘E
.....	
Page Setup...	
Print All...	⌘P
Print Special...	⌘π
.....	
Quit	⌘Q

New (cmd-N)

Clear the present list. If the current list has been changed since it was last saved, you will be asked if you wish to discard the changes or save them first.

Open... (cmd-O)

Open existing list from a FileList or **FileList+** file, replacing the current list. If the current list has been changed since it was last saved, you will be asked if you wish to discard the changes or save them first. When a list is opened, if it is not of the latest list format, it will be converted after it has been read in. If the list must be converted, it does not contain all scan information found in later versions of **FileList+**, and rescanning of the volumes is recommended. A progress indicator with cancel button will be displayed during the conversion. NOTE: If the conversion is canceled, or aborted due to an error, the old list data will be lost.

Merge File...

Merge a list from a FileList or **FileList+** file with the current list. If the current list contains volumes with the same name(s) as the list to be merged, you will be prompted to rename (the volume being added) or replace (the old volume). If the list to be merged is an older format, it will be converted to the newer format automatically, just as in the Open command above. List files may be merged when launching **FileList+** by selecting all lists and opening one of them.

Save (cmd-S)

Saves all list data from both lists to a **FileList+** file. If the list is untitled, user will be prompted for a file name. If the list contains only one volume, the default name will be the volume name with “ List” appended. NOTE: **FileList+** files saved this way are not compatible with original FileList applications.

FileList+ User's Manual

Save As... (cmd-option-S)

Saves all list data from both lists to a **FileList+** file, prompting user for a new file name.

Save As Old Format

Standard Save As... but save in old FileList format, stripping off match and version information. Information is removed from database in performing this operation, so save first in new format if this is not desired.

Save [Selected] Text (cmd-[shift]-E)

Export contents of active list window to a user specified text file. Format is selected by the Text Export options in Options menu item. Holding down the shift key when selecting this item will save only selected records. (Note that files saved this way cannot be re-read by **FileList+**)

Page Setup...

Standard page setup for selecting print options.

Print All[/Selected]... (cmd-[shift]-P)

This command will print the contents of the active list window. If the shift key is held down when this item is selected, only selected records will be printed (the menu item changes to Print Selected...)

Printouts are marked at the top of each page with the list name and page number, as well as the second line of the Statistics from the window listed.

Print Special... (cmd-opt-P)

Print only certain groups of file records in the list. See the "**Special**" **Functions** section earlier in this document for a description of the "Special" selection dialog used for this function.

Quit (cmd-Q)

Quit the application.

EDIT MENU

Edit	
Undelete Files	⌘Z
<hr/>	
Cut	⌘X
Copy	⌘C
Paste	⌘V
Clear	
<hr/>	
Hide Find Controls	⌘F
Find Again	⌘G
Find Previous	⌘B
Find First	
Find All	⌘L

Undo/Undelete Files (cmd-Z)

When file records have been deleted from the list but the list has not yet been saved or merged, this command will un-delete the files that have been deleted. When editing a text field, this will undo the last operation performed.

Cut (cmd-X or F2)

Used for editing text in the Find text fields.

Copy (cmd-C or F3)

Copy all selected records to the clipboard. Format will be determined by Text Export settings in General Options menu item.

Paste (cmd-V or F4)

Used for editing text in the Find text fields.

Clear (cmd-V)

Used for editing text in the Find text fields. When option key held down when selecting this item, the list will be unsorted, back to the order it was originally scanned.

Show/Hide Find Controls (cmd-F)

Enable/disable the display of the Find section in the active window. See User Interface section above for more information about Find function.

Find Again (cmd-G)

Perform the Find function using the current find parameters, starting with the next record in the list, or the first record in the list if no record is currently selected, and continuing sequentially down the list. If no matching item is found, a beep will sound. Subsequent executions will wrap around to the beginning of the list. See User Interface section above for more information about Find function.

FileList+ User's Manual

Find Previous (cmd-B)

Perform the Find function using the current find parameters, starting with the previous record in the list, or the last record in the list if no record is currently selected, and continuing sequentially up the list. If no matching item is found, a beep will sound. Subsequent executions will wrap around to the end of the list. See User Interface section above for more information about Find function.

Find First

Perform the Find function using the current find parameters, starting with the first record in the list, and continuing sequentially down the list until a match is found. If no matching item is found, a beep will sound. See User Interface section above for more information about Find function.

Find All (cmd-L)

Shift the present Selection Group onto the stack, clear all selections, then set the select flag for each record that matches the search parameters. See User Interface section above for more information about Find function.

VOLUMES MENU

Volumes

Scan Volume(s)...	[^ key]
Scan All Volumes	
Scan Folder...	[~ key]

✓ Automatic Scan/Eject	
Don't Eject after Auto-Scan	
✓ Replace Volumes w/same Name	
Filter Files on Scan	

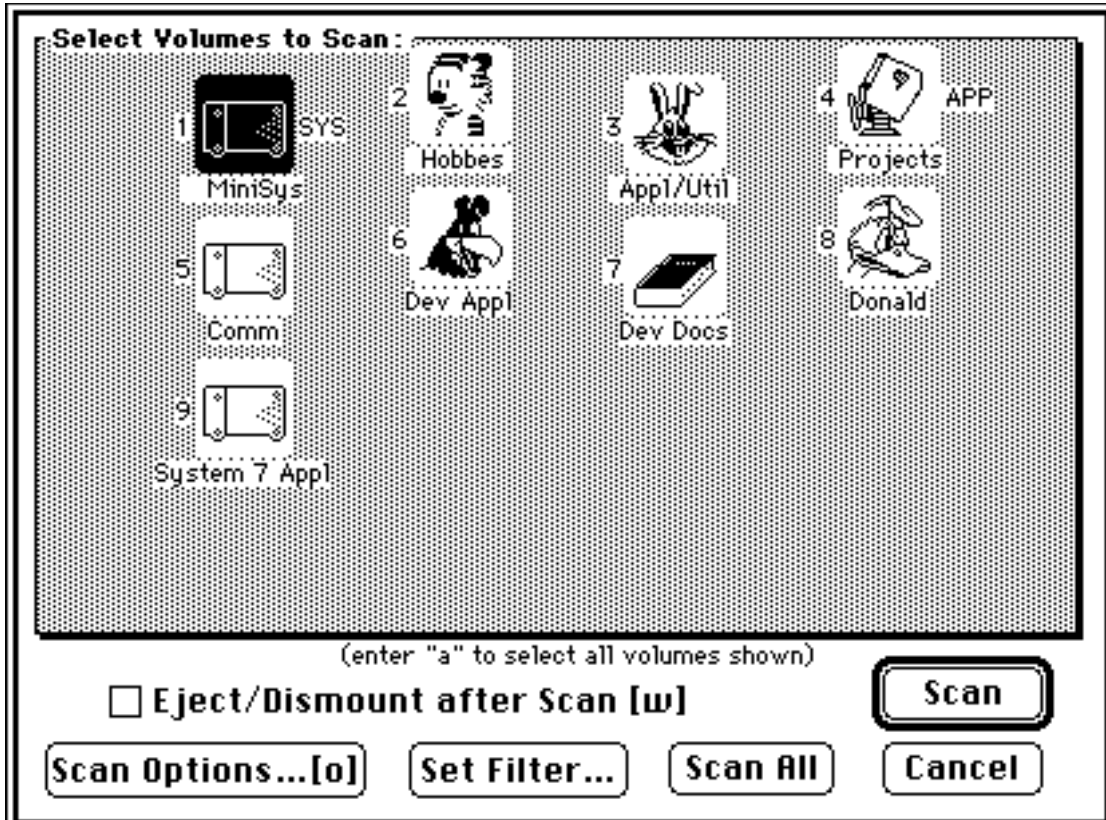
Scan Options...	

Delete Volume(s)	[del key]
Rename Volume(s)...	⌘R

FileList+ User's Manual

Scan Volume(s)... (^)

Select volumes for scanning from list of currently online volumes. As can be seen in the example below, the Scan Volume(s)... dialog is icon based. Each icon has a character to its left indicating the key that may be used to select that volume (1,2,3 etc.), as well as the volumes name and an indication if the volume is the current system (SYS) and/or application (APP) volume. Typing "a" or "cmd-a" will toggle the selection of all volumes. Of course, a volume may also be selected or deselected by clicking on the icon. Volumes selected to be scanned will be highlighted, as shown for the first icon below. The "~" key may be used to select this menu item (it's the same key as the "~").



Selecting the **Eject/Dismount after Scan** checkbox will cause the volumes scanned to be ejected and dismounted after scan is complete. NOTE: This overrides the Don't Eject after Scan option which only applies to Automatic scans.

Clicking the **Scan Options** button or hitting the "o" key will present the Scan Options dialog discussed below.

If **Filter Files on Scan** scan option is selected, the **Set Filter...** button will appear as shown above. Clicking the **Set Filter...** button will present the Filter Options dialog discussed under the Files menu section below.

Clicking the **Scan All** button will scan ALL mounted volumes (up to 40!), not just those selected here. This is useful when more volumes are mounted than can be displayed (16). Same as Scan All Volumes menu item.

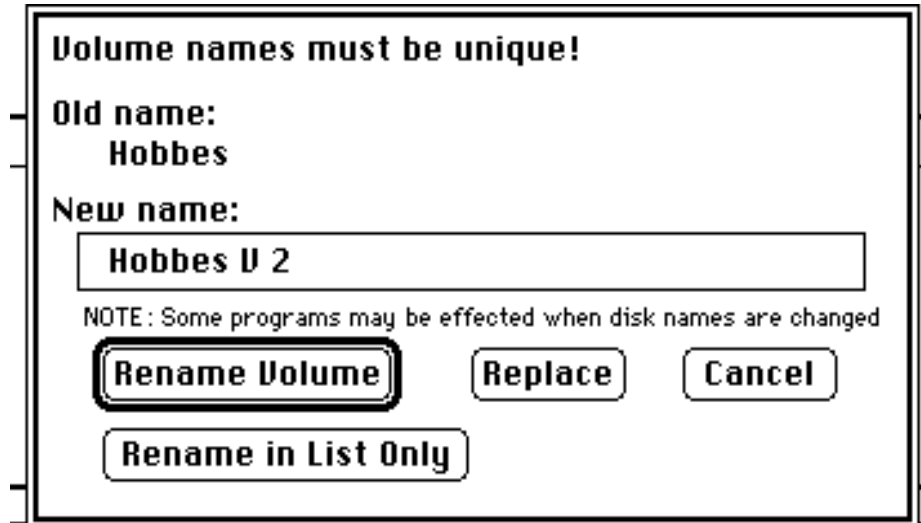
Clicking the **Scan** button will scan the selected volumes with the options selected. If no volumes have been selected for scanning, this button will be inactive.

Clicking the **Cancel** button will exit the dialog without performing any scan.

During any scan, a progress dialog will be displayed containing: the volumes name, and indication of this volume is replacing another volume in the list, a progress indicator, the current scan options, and a **Cancel** button. Options may not be changed during the scan. If a scan is cancelled, all data for the volume currently being scanned is removed, and the volume is not ejected/dismounted, regardless of the eject settings

FileList+ User's Manual

If a volume being scanned has a name that is already found in the volumes list and the "Replace Volumes w/same Name" option is NOT enabled, you will be requested to rename that volume or manually replace the old volume using the dialog shown below.



If you wish, you may rename the volume both physically on the disk as well as in the list with the **Rename Volume** button, providing the volume is not write-protected by selecting the Rename Volume button. You may also choose to **Replace** the present list records for the volume with the same name with the contents of the currently scanning volume, or to rename this volume for the purposes of this list only by clicking **Rename in List Only**. You may also choose to **Cancel** this scan.

NOTE: Renaming a volume, especially your hard disk, can cause certain applications to "lose their way".

Scan All Volumes

Scan all mounted volumes (up to 40) using current scan options. Standard Scan Progress dialog will be shown with a Cancel button to quit scanning.

Scan Folder... (~)

You will be asked to select a folder for scanning. The folder will then be scanned using current scan options. Volume information will reflect the entire volume the folder resided on. If the name of volume the folder is exists in the volumes list already, then one of the following options must take place:

- 1) The volume with the same name must be the last scanned volume in the list, or
- 2) The folder contents must be chosen to replace the currently existing volumes files, or
- 3) The volume name in the list for this scan must be made unique.

The "~" key may be used to select this menu item (it's the same key as the "~").

Automatic Scan/Eject

When this item has been selected and a volume becomes mounted (disk inserted, etc.) while **FileList+** is active, the volume will be scanned, added to the list, and then dismantled/ejected. This is useful for scanning numerous removable disks. This works with any movable medium: floppy disks, CD-ROM disk, etc. This item controls the same option found in the Scan Options dialog.

Don't Eject after Auto-Scan

Disable the automatic ejection or dismantling of any volume that is mounted or disk that is inserted while **FileList+** is running. This is useful if you wish the volume to remain around for later use. This item controls the same option found in the Scan Options dialog.

FileList+ User's Manual

Replace Volumes w/same Name

When checked, this indicates the automatic replacement of an existing volume with a newly scanned volume of the same name will be performed. This avoids the dialog asking if you want to rename or replace the volume. This item controls the same option found in the Scan Options dialog.

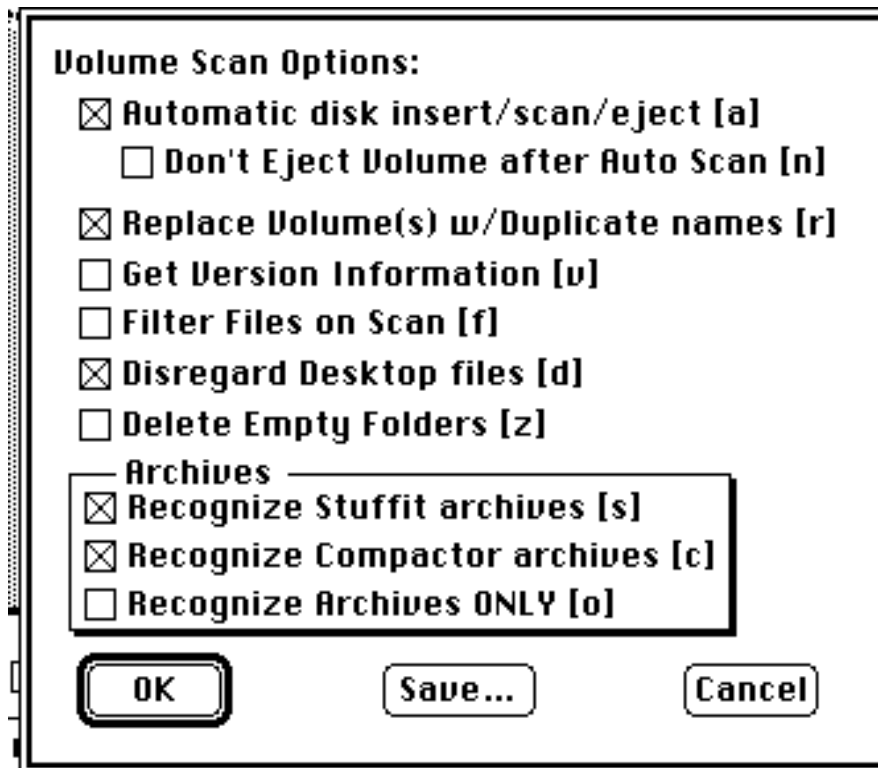
A word of warning here: if two or more volumes with the same name are selected to be scanned at one time, all volumes scanned after the first (with the same name) will request renaming, regardless of this option. User's should try to maintain unique names for each volume.

Filter Files on Scan...

When checked, this indicates that files will be filtered using the current File Filter options as they are scanned. This item controls the same option found in the Scan Options dialog.

Scan Options... (cmd-opt-M)

All volume scan options are selectable via this menu with the dialog shown below.



The **Automatic Scan**, **Replace Volume(s)** and **Don't Eject** items select the same options as the menu items of the same names under "Volumes". The **Get Version Information** checkbox determines if applications, system files, and other executable type files will be scanned for version number information during a volume scan. See the "**Compare File Versions**" section for possible uses of this info.

Notes: scanning for version information will slow down scanning substantially. Version information for files that are open, including active applications, INITs and System files cannot be obtained and will be indicated with the string "n/aERR#" where ERR# is the error resulting when the search was performed, "-193" for open files.

Version information is not available for files within Archives. The required information is stored in compressed format and cannot be retrieved by FileList+.

The **Filter Files on Scan** option will check a file against the current filter options before adding it to the list during a scan. The **Disregard Desktop files** option will skip over the invisible Desktop files instead of adding them to the list during a scan. If the **Delete Empty Folders** option is checked, **FileList+** will delete any folder that is empty on the volume being scanned. The **Stuffit Archive** and **Compactor Archive** options determine if **FileList+** will search inside these types of archive files. The **Archives ONLY** item will make **FileList+** only get files from archives, providing one or more archive type has been selected. If either archive option is selected, any a file of that archive type is found it is treated like a folder, i.e. all its files, folders, sub-folders, ... are listed.

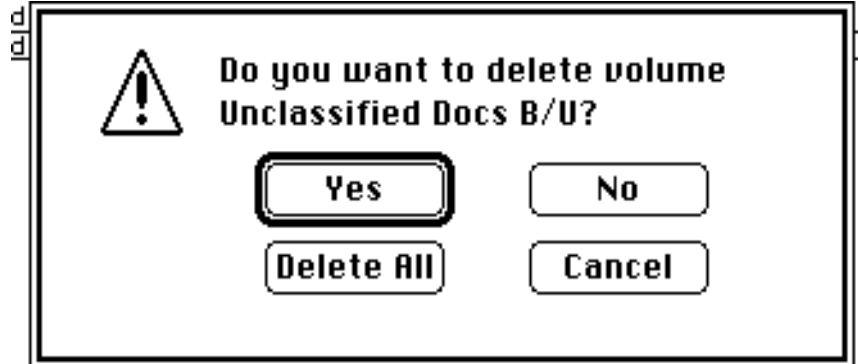
Clicking **OK** in this or any options dialog will cause the selected options to take effect but will not save them. Clicking **Cancel** will ignore the options settings made in this dialog. Clicking **Save** will allow you to save all options (see the "**Options Saving**" section above).

Notes for Power Users: the version information is searched for in one of two locations. First the "vers" resource is searched for and, if it is found, the short version number string is used. If this resource is not found and the files Bundle bit is set, the signature resource is opened and used as the version information. If the version information is too long (longer than 12 bytes), then the string is searched for the first occurrence of a number character and the next 12 bytes are used for the version number. As far as I can tell, this process mimics the process the Finder's Get Info uses.

FileList+ User's Manual

Delete Volume(s) (delete key)

Remove all records associated with each selected volume from the list. A caution will be presented giving you the option of verifying each selected volume or just deleting them all without further cautions. This does not effect actual disk files.



Rename Volume(s) (cmd-R)

For each selected volume, you will be presented with a dialog to rename that volume in the list. This does not effect the actual volume name (on the disk) which must be changed manually (in the Finder or whatever) to stay in sync with the list when this item is used. Renaming volumes when they are scanned does allow you to rename the actual volume, however.

FILES MENU

Files	
Compare File Versions	⌘M
Custom File Matching	

Match Prefs...	⌘μ
File Filter Options...	

Reset Match Flags	

Delete Selected Files... [del key]	
Delete Files Special...	

Compare [Selected] File Versions (cmd-[shift]-M)

Perform a "smart" comparison of all files in the list, indicating files that are exact matches, as well as those that are older or newer versions of the same document or executable file. **Executable** files are discriminated from **documents** and the comparisons are tailored to reflect this. See further information in File Compare and Mark Functions section above.

Note: The Match Preferences... dialog will be automatically presented to you first if it has not been selected since the program was run or the List file loaded.

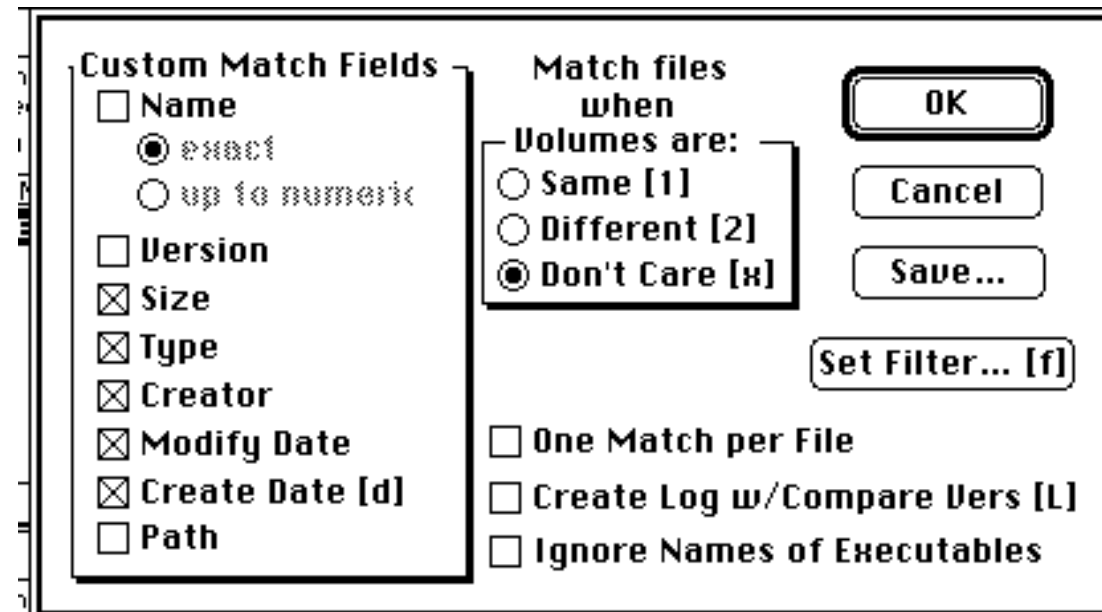
Custom [Selected] File Matching (cmd-[shift]-K)

Perform a custom comparison of all files in the list (as described above in the File Compare and Mark Functions section) using the current Match Preferences.

Note: The Match Preferences... dialog will be automatically presented to you first if it has not been selected since the program was run or the List file loaded.

Match Preferences... (cmd-opt-M)

The match criteria are selectable via this menu item with the following dialog:



These criteria include each file item such as **Name**, **Size**, etc. These items are used for Custom File Match only. The **Name** field has two options, "**exact**" and "**up to numeric**". The "**exact**" requires file names to match to the last character. The "**up to numeric**" first strips each file name of all characters after the first numeric character occurring in the name, plus any trailing spaces that are left after that. It then compares these truncated name. The purpose of this is to allow a file name to contain version information, but still be matchable via this option.

An additional group selects the required volume relationship between two files being compared. These items are "**Same Volume**" and "**Different Volume**". Selecting "**Different Volume**" will ensure that no match will occur unless the files are on different volumes, to distinguish files that have backups, for instance. Selecting "**Same Volume**" will ensure that no match will occur unless the files are on the same volume, to distinguish files that are duplicates. "**Don't care**" will disable both. If "**Don't care**" is selected, the volume will not be considered during matching.

If the **One Match per File** option is selected, then multiple matches ("•m") will never be indicated, i.e. once a file has been matched once, it will not be compared for further matches.

If the **Create Log w/Compare Vers** option is selected, then you will be given the option to specify a Log file whenever the Compare File Versions operation is performed.

If the **Ignore Names of Executables** ignore option is selected, during Compare File Versions as well as Custom File Matching the names of executable type files is ignored.

All match and filter options are saved in the FileList+ List file when it is saved. Default options for new List files are saved in the Options file when you elect to save them with the Save button.

Careful consideration should be made selecting these items, as this will greatly effect the results. For example, deselecting the **Name** is useful in finding multiple copies of a file that have been renamed. Deselecting the **Modify Date** and **Size** is useful in finding various versions of the same file and so on.

FileList+ User's Manual

File Filter Options...

Select the File Filter Options dialog.

(Also selectable via the Match Preferences, Delete Files..., and Print Special... dialogs via the Set Filter button)

The File Filter may be used as follows:

- to filter files during a volume scan to allow only files of interest to be added to the list.
- to restrict the match/compare operations to certain files that pass the File Filter requirements.
- to cull the file list via the Delete Files... menu item (described below).
- to print selected files via the Print Special... menu item
- to select file records via the Select Files Special... menu item

All match and filter options are saved in the List file when it is saved. Default options for new List files are saved in the Options file when you elect to save them with the Save button.

The File Filter options allow you to select certain common file types via a pop-up menu, and/or select up to 2 sets of custom file TYPES or CREATORS, and/or set a minimum size for files of interest, and/or select files based on their create or modify dates.

The File Filter dialog is shown below:

File Filter Options:

Non-System Files Only

All Types OR, any of following:

Executables (APPL, INIT etc.)

More Types:
○ Items Selected

Minimum File Size
100 K

Created to

Modified to

Custom

	Type	Creator
#1	<input type="checkbox"/> INIT	<input type="checkbox"/> ????
#2	<input type="checkbox"/> SYS	<input type="checkbox"/> ????

If the **Non-System Files Only** option is enabled, then the filter will pass only files that have the System (a.k.a. Locked Name) flag in the Finder flags word set to a "0". This flag is set for all file that have locked names, such as the System and the Finder. Finder flags information is available only in scans performed with the later versions of FileList+, and therefore this option is not usable on lists scanned with the original FileList or versions of **FileList+** previous to 1.0b13.

If the **Minimum File Size** option is enabled and a value (in Kbytes) is entered, then the filter will pass only files this size or larger, in addition to the type checking, if any.

If the **Created or Modified dates** option is enabled and a date range is entered, then the filter will pass only files whose Created or Modified dates fall within the specified range, respectively.

Several popular file types are available, as well the catch-all button "**All Types**". When "All Types" is selected (checked), the Executable Files item, types menu, and Custom items are ignored, and the Executable Files item and Custom selections are disabled.

Executables will pass all files of the types "APPL", "INIT", "xNIT", "cdev", "xdev", "RDEV", "PRES", "PRER" and "mdvr", as well as all files with version information (such as system files, etc).

FileList+ User's Manual

Deselecting “**All Types**” and clicking on the pop-up menu icon next to the “**More Types:**” label will produce the selection menu shown below:

MacPaint	MPNT
MacDraw I & II	DRWG
<input checked="" type="checkbox"/> Microsoft Excel	XCEL
Microsoft Word	MSWD
HyperCard	STAK
Compactor	CPCT
DiskDoublor	DDAP
Stuffit!	SIT!
TEXT Files	TEXT
SYS Files	ZMAC
INIT Files	INIT
Control Panel File	cdev
Font & DA Files	DMOU
Applications	APPL

Select All of Above	
Deselect All of Above	
Set Custom 1 to Selected File...	
Set Custom 2 to Selected File...	

The file TYPE and/or CREATOR for each type of file is shown to the right of the description. Selected files types will have a check-mark. In the example, only files for the application Excel™ have been selected.

Custom 1 and Custom 2 are editable file type and creator fields with enable checkboxes. If one is enabled and the other isn't for a given Custom set, the disabled field will match on anything. For example, selecting Custom 1 Type field with a value of “INIT” and disabling Custom 1 Creator will allow any INIT type file to pass the filter.

NOTES FOR POWER USERS:

The pop-up menu is ID 141 in the MENU resource. STR# resource ID 150 corresponds to item 1 in the pop-up menu, STR # ID 151 to item 2, etc. The first string in each STR# resource is the TYPE field and the second is the CREATOR. Leaving an entry blank indicates don't care/wildcard. Of course, use ResEdit at your own risk and work on a copy...blah blah blah.

Clicking **OK** in this or any options dialog will cause the selected options to take effect but will not save them. Clicking **Cancel** will ignore the options settings made in this dialog. Clicking **Save** will allow you to save all options (see the “**Options Saving**” section above).

If you click the **Reset** button, all options in this dialog will be set to the “factory” default settings. If you **Cancel**, the changes will not take effect, however.

Reset Match Flags

Name says it all. Clears all match related flags for each file record. If file records were sorted by this field, the sort indicators will be reset.

Delete Selected Files... (delete key)

Delete the selected file records from the list and optionally, the actual disk files they represent. You will be asked if you wish to delete **Records**, **Disk Files**, or **Cancel** the delete. If you choose to delete disk files, you will be prompted for concurrence before each volume's files are deleted, starting with online volumes, then you will be asked to mount any offline volumes with files to be deleted. When you are asked if you wish to delete the files from a particular volume, you may also elect to delete any folders that are emptied by deleting the files from them.

After a file delete is performed the volumes list is left unchanged, even though it no longer correlates with the files list. After a deletion is performed, you need to keep track that this is not a complete list anymore.

WARNING: Files that are deleted are handled differently depending on the System version you are running. Under **System 7**, files and folders are moved to the Trash, and may be returned to their original locations by performing a Put Away from the Finder File menu. The exception to this is when two or more files with the same Name are deleted from the same volume. All but the first of these files is immediately deleted and may not be retrieved from the Trash. Under **System 6**, files deleted from **FileList+** are only retrievable via disk utilities, just as if you put a file in the trash and then emptied it. ***Use the delete files function at your own risk!!***

NOTE: File RECORDS deleted by the Delete Files menu items are not actually removed from the database until a Compact is performed. A Compact is performed whenever the list is Saved (except Save Text), or whenever the Merge operation is performed. The Undo/Undelete command in the Edit menu can be used (before Compacting) to un-delete file records. File records that have been deleted but not Compacted are hidden from view and are ignored in all operations. Undeleted File records that represent disk files that have been deleted by FileList+ are shown with inverse video (black background) selection bars.

Delete Files Special...

Delete certain groups of file records from the list or optionally, the actual disk files they represent. See the **"Special" Functions** section earlier in this document for a description of "Special" selection dialog.

For further details of the Delete Files operation see the Delete Selected Files item above.

SORT MENU

Sort	
Files by selected (& last)	
Files by name	⌘1
Files by match flags (& last)	⌘3
Files by version & name	
◆ Files by type (& last)	⌘4
Files by creator (& last)	
Files by size	⌘2
Files by created	
Files by modified	⌘5
Files by volume (& last)	
Files by path (& last)	
✓ Files by match index, flags & last	

Volumes by selected	
Volumes by name	
Volumes by free	
Volumes by total	
Volumes by files	
Volumes by created	
Volumes by modified	

NOTE: Clicking the field header in the window will sort by that field. Holding down the shift key (Reverse Sort modifier) while selecting sort item will perform a reverse sort. For the Files list, several sort fields perform a two stage sort. These are indicated by the “(& last)” in the menu item. The primary sort item for each list is indicated in the Sort menu with a check mark, the secondary is indicated with a diamond mark. The primary sort item for each list is indicated in the header as an inverse video field header with a corner tab, as the Match (“MTCH”) field does in the example below. The secondary sort field (if any) is indicated with just inverse video.

FILE NAME	MTCH	VERSION	TYPE
------------------	-------------	----------------	-------------

Files by selected (& last)

Sort the files list according to whether a record has been selected or not, then by the previous sort item.

Files by name (cmd-1)

Sort the files list by name in alphabetical order, ignoring case of characters.

Files by match flags (& last)

Sort the files list placing all matched files at the top of the list, followed by files with no matches. If Version match information is present, the files with newer, older, and both older and newer flags will be sorted in that order. See Compare File Versions item for more information.

FileList+ User's Manual

Files by version and name

Perform a sort by two fields, first the file names, then the file versions.

Files by type (& last) (cmd-4)

Sort the files list by the Types field, with case-sensitivity.

Files by creator (& last)

Sort the files list by the Creator field, with case-sensitivity.

Files by size (cmd-2)

Sort the files list by the Size field.

Files by created

Sort the files list by the files create date and time.

Files by modified

Sort the files list by the files modify date and time.

Files by volume (& last)

Sort the files list by the volume name field.

Files by path (& last)

Sort the files list by the path field. The volume name portion of the path is ignored

Files by match index, flags (& last) (cmd-3)

Files will be sorted by the following criteria in the sequence shown:

- 1) whether any match flags are set ("m", "•", "n" or "o")
- 2) by the index that indicates the files are related
- 3) by the match flags
- 4) by the last sort item.

For example, all files that are older or newer versions of the same file as determined by the Compare Versions function will be grouped together, despite the fact that no other fields would sort the files in this sequence. The header will highlight the "MTCH" field, but without the primary sort field tag.

Sorting this way is useful for inspecting the results of a file match operation. This is the default sort criteria performed after after matching/comparing a previously unsorted list.

Volumes by selected

Sort the volumes list according to whether a record has been selected or not.

Volumes by name/free/files/created/modified

Sort the volumes list according to the selected field.

SELECT MENU

Select	
Move to Pointer	[ret key]
<hr/>	
Select All Records	⌘A
Select Files Special...	
Swap Present Group & Group A	⌘;
Swap Present Group & Group B	⌘'
<hr/>	
Pop Last Selection Group	⌘,
Push & Get Next Selection Group	⌘.
Push Present Group & Clear	⌘/
Toggle Present Selections	⌘]
Present = Pres OR Last, Shift	⌘=
Present = Pres AND Last, Shift	⌘-
<hr/>	
Reset Stack Selection Groups	

Move to Pointer (return key)

Position the vertical scroll so that the record last selected will be visible.

Select All Records (cmd-A)

Set the select flags for all records in the active windows list. Before performing this, it will push the current selections onto the stack if any selections have been made.

Select Files Special...

Set the select flags of certain groups of file records. See the **“Special” Functions** section earlier in this document for a description of “Special” selection dialog.

Swap Present Group & Group A/B (cmd-;)/(cmd-shift-')

Exchange the current selection group and the contents of Selection Group A or Selection Group B respectively.

Pop Last Selection Group (cmd-,)

Rotate the selection group stack for the active window, placing the last selection group to be “pushed” onto the stack into the present selection group. See the example in the Selection function description.

Push & Get Next Selection Group (cmd-.)

Rotate the selection group stack for the active window, placing the selection group at the top of the stack into the present selection group. See the example in the Selection function description.

FileList+ User's Manual

Push Present Group & Clear (cmd-/)

Push the present selection group onto the stack for the active window, and clear the present selection group. If the stack was full before this command was executed, the selection group at the top of the stack will be discarded. This command is executed automatically for several operations, if the present selection group has any selection. Those operations include Select All, Select Special, and Find All.

Toggle Present Selection (cmd-])

De-select all selected records in the active window, and select all records not previously selected.

Present = Pres OR Last, Shift (cmd-=)

The present selection group in the active window will be replaced with the results of a logical OR operation of the present selection group, and the last selection group pushed onto the stack. The stack will then be shifted down, resulting in one less group on the stack. For example, if the first selection group consisted of records 1, 3 and 10, and the last selection group consisted of record 2, the result of this operation is that the present selection group would be 1, 2, 3 and 10, and the stack would be shifted over the last selection group, leaving one less selection group.

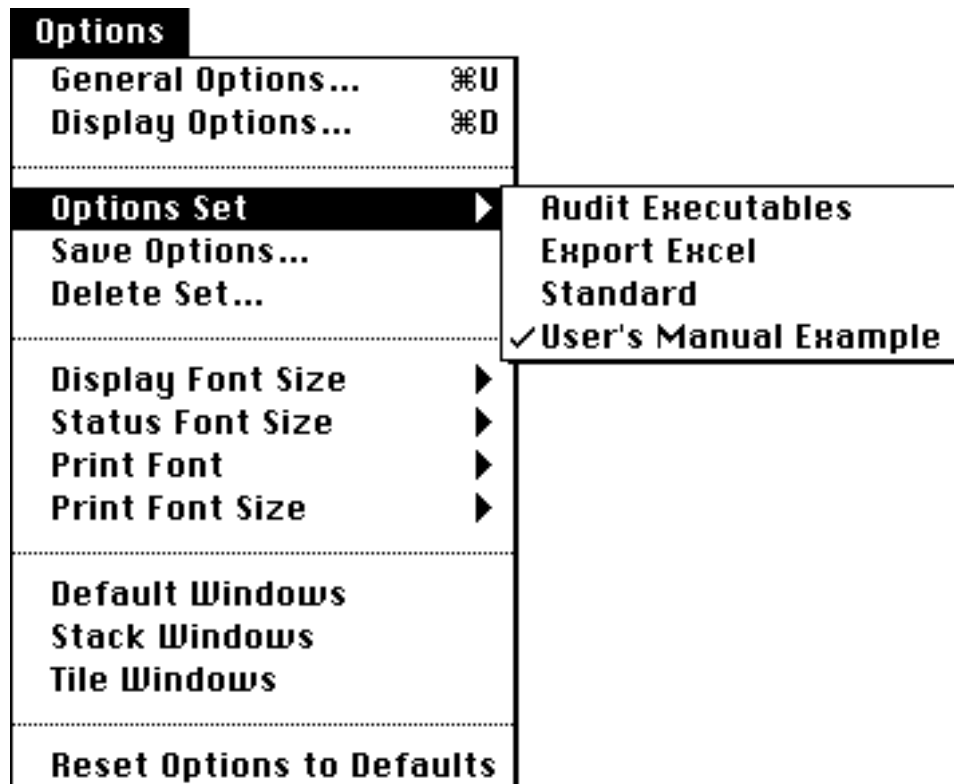
Present = Pres AND Last, Shift (cmd-=)

The present selection group in the active window will be replaced with the results of a logical AND operation of the present selection group, and the last selection group pushed onto the stack. The stack will then be shifted down, resulting in one less group on the stack. For example, if the first selection group consisted of records 1, 3 and 10, and the last selection group consisted of records 2, 3, 4 and 10, the result of this operation is that the present selection group would be records 3 and 10, and the stack would be shifted over the last selection group, leaving one less selection group.

Reset Stack Selection Groups

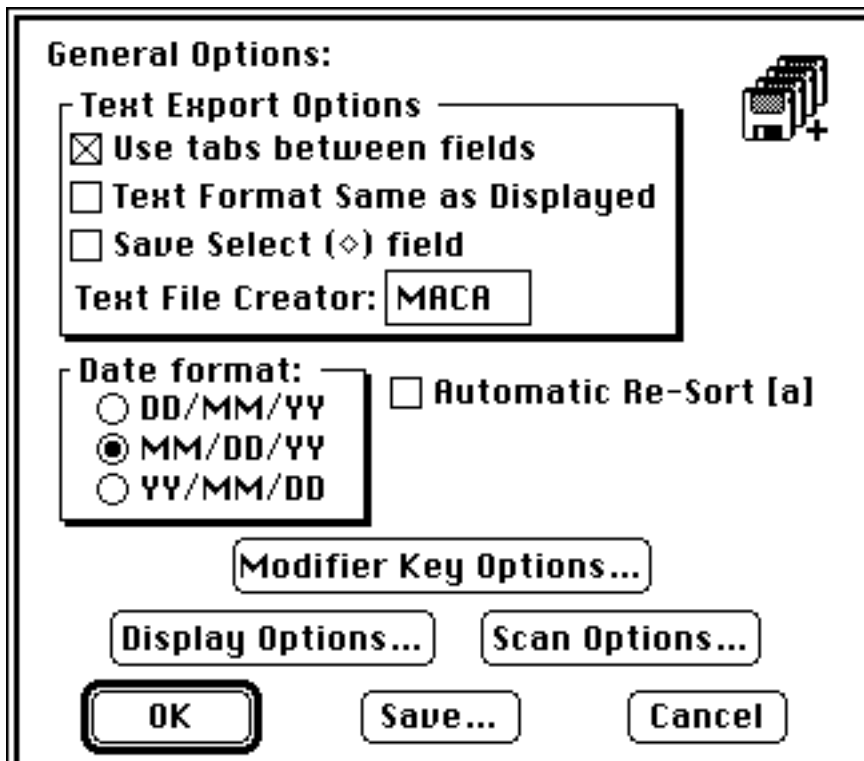
Clear all selection groups in the stack, but leave Group A and Group B alone.

OPTIONS MENU



General Options... (cmd-U)

Select options from dialog shown below.



FileList+ User's Manual

The first three options effect how text is exported from **FileList+**, either via a Save Text operation or a Copy (to clipboard) operation. "**Use Tabs**" selects tabs or spaces as delimiters between fields. If tabs is not selected, fields are space delimited and have fixed column widths. Tabs are used to import the data into databases and spreadsheets. The "**Text Format Same as Displayed**" option specifies if text should be exported as it is shown in the current display, including which fields are displayed and the order they appear. If this option is not selected, the text format will be fixed, in the default sequence (shown in the View-By menu), and all fields will be present. "**Save Select field**", when enabled, will place a bullet character in the first field for each selected record. The **Text File Creator** item allows you to specify the file creator to be used when saving text files. This allows the file to be opened by double clicking instead of importing. Common creators are shown in the File Filter Options More Types pop-up menu to the right of the "|" character.

The **Date Format** options select the format to be used throughout **FileList+** for representing dates.

The **Set Default Window** checkbox can be used with the **Save** button to set the default window positions and sizes to be used when **FileList+** is launched. These settings can be returned to at any time by selecting the Default Windows menu item.

The **Scan Options...** and **Display Options...** buttons allow you to access the dialogs associated with the menu items of the same names.

Clicking **OK** in this or any options dialog will cause the selected options to take effect but will not save them. Clicking **Cancel** will ignore the options settings made in this dialog. Clicking **Save** will save all options in a file called "FileList+ Options". Clicking **Save** will allow you to save all options in a file called "FileList+ Options" (see the "**Options Saving**" section above).

Selecting the **Modifier Key Options...** button will present you with the dialog shown below to select the keys that must be held down to perform the selected operations, which are described in the User Interface Functions section earlier in this documentation.

Modifier Key Selections:

Hold down these keys when clicking in header to: _____

Hide Field:	<input checked="" type="checkbox"/> ⌘	<input type="checkbox"/> Shift	<input type="checkbox"/> Option	<input type="checkbox"/> Control
Restore Fields:	<input checked="" type="checkbox"/> ⌘	<input type="checkbox"/> Shift	<input checked="" type="checkbox"/> Option	<input type="checkbox"/> Control
Reverse Sort:	<input type="checkbox"/> ⌘	<input checked="" type="checkbox"/> Shift	<input checked="" type="checkbox"/> Option	<input type="checkbox"/> Control

Hold down these keys when clicking on record to: _____

Extend Selection:	<input type="checkbox"/> ⌘	<input checked="" type="checkbox"/> Shift	<input type="checkbox"/> Option	<input type="checkbox"/> Control
Select Files in Parent:	<input checked="" type="checkbox"/> ⌘	<input type="checkbox"/> Shift	<input type="checkbox"/> Option	<input type="checkbox"/> Control
Select Files in 2nd Parent:	<input type="checkbox"/> ⌘	<input type="checkbox"/> Shift	<input checked="" type="checkbox"/> Option	<input type="checkbox"/> Control
Copy field to search:	<input type="checkbox"/> ⌘	<input type="checkbox"/> Shift	<input checked="" type="checkbox"/> Option	<input type="checkbox"/> Control

Clicking **OK** in this or any options dialog will cause the selected options to take effect but will not save them. Clicking **Cancel** will ignore the options settings made in this dialog. Clicking **Save** will allow you to save all options (see the "**Options Saving**" section above).

FileList+ User's Manual

Memory Options... (cmd-option-U)

If you press the Option key while choosing the **General Options** menu item the following memory options can be set, but become active only on the next program start:

*** Heap size**

The heap size that should remain after **FileList+** has allocated all its tables. You should leave at least 96,000 Bytes for the heap. User's with large printer drivers such as used for the HP DeskWriter should set this value to about 200,000.

*** Volumes percentage**

The percentage of how many volume records (any volume, folder and file is considered a record) are expected. Clicking on the associated text automatically calculates and displays the current volume percentage.

*** Files percentage**

The percentage of how many file records (any volume, folder and file is considered a record) are expected. Clicking on the associated text automatically calculates and displays the current file percentage.

*** Average name size**

Average name size (of volumes, folders and files) expected. Clicking on the text automatically calculates and displays the current average name size.

These values are used by **FileList+** to allocate its tables. Everything must fit into available memory. You can use the "About FileList+..." menu item in the Apple menu to see how memory is allocated. To get more memory under MultiFinder for longer lists use the Finder's "Get Info" command. (e.g. to be able to list all files on an "EduCorp CD-ROM 4.0" disk containing 14550 files, set the partition size to about 1200 K.)

Display Options... (cmd-D)

Select which fields to display in the Files window, as well as select your choices for what items to display above the header and how to show sizes. Disabling the display of fields not of interest might allow you to see the path at the same time as the file name, for example. This is particularly important for those with smaller screens on their Macs. These options are selected via the following dialog box:

The dialog box is titled "Display File Fields" and "Other Display Options:". It contains several checkboxes for selecting fields to display (Name, Match, Version, Type, Creator, Size, Create Date [d], Modify Date, Volume [L], Path) and other options (Show Statistics [i], Show Time w/Date [w], Auto-Sized Fields [z], Show Find Controls: Files, Volumes, Show Sizes in K Bytes: Files, Volumes). There are also buttons for OK, Cancel, Save..., Apply, and Reset.

The default display options are as shown above, all fields selected. Entering the first character of an field item (or the character shown in brackets, ex. "[d]", when indicated) will toggle that item. Entering "a" or clicking the **All** button will select all File fields.

Clicking **OK** in this or any options dialog will cause the selected options to take effect but will not save them. Clicking **Cancel** will ignore the options settings made in this dialog. Clicking **Save** will allow you to save all options (see the "**Options Saving**" section above).

The **Apply** button will update the displays to reflect the selections made to allow you to see your changes. A **Cancel** performed after an **Apply** will revert to the previous settings.

The **Reset** button will set all display options to their program defaults.

FileList+ User's Manual

The format of text placed in the Clipboard for a Copy or placed in a text file for a Save Text will be the same as the format in the display if the "Text Format Same as Displayed" item is selected in the General Options menu item.

Several other options for window display are offered here. See the example in the "Basic Operation" section at the beginning of this manual for a sample of the Statistics and Find Controls options available here.

The Statistics bar in each window may be hidden or enabled by selecting the **Show Statistics** option. Information that may be found in the statistics includes:

First Line:

- The current files name;
- If the current list has been changed since last saved (indicates "(NOT saved)" and "•" in title);
- The count of files/volumes in the current window;
- The amount of application memory used/available in Kbytes.
- If the version field (in the Files window) is hidden because there is no file version information in the current list, this will be indicated with "(no version data)".
- If the match field (in the Files window) is hidden because there are no match flags set in the current list, this will be indicated with "(no match data)".
- If an operation has been performed that presents a "progress" dialog, such as a Sort, the time this operation took will be displayed in minutes and seconds.

Second Line:

- The number of records currently selected.
- The total size (and Free Size in Volumes window) of all selected records.
- Which group number is the present group, and what other groups are in the selection stack.
- In the Files window, if the match info is current, this will be indicated, including also;
 - a count of matching files, and;
 - a total byte count of matching files (not counting originals)
- If a match has been performed, the time it took will be displayed in minutes and seconds.

If the match info is not current, the second line of Statistics for the Files window will not include the "Match Info".

When not otherwise indicated, the defaults for the Statistics are: File saved, match not current.

The display of time information with the date fields for both lists is enabled by selecting the **Show Time w/Date** option. If not selected, only the date is displayed, in the form selected in the General Options dialog above. A special key command, command-t, will toggle this option while the lists are active.

Several fields may be automatically resized to recover unused space on the screen. To disable this feature, de-select the **Auto-Sized Fields** option. When enabled, the File Name, Version, Size (Bytes) as well as the Volume Free and Total size fields will be automatically resized to accommodate the largest value in the current lists.

For each window, you can elect to display sizes in **Kbytes** or just bytes. If Kbytes is selected, sizes will be in Kbytes and will have a K appended to them and commas every three digits. The Kbytes option does not apply to text copied to the clipboard or a Save Text file. That text is always in just bytes.

Another Display Option is the **Find Controls**. These are the controls for the Find function that are displayed above the header bar when enabled. The Find function is described in detail in the User Interface Functions section of this document. The command Show Find Controls/Hide Find Controls in the Edit menu can be used to enable or disable the Find Control display for the active window without going to this dialog.

FileList+ User's Manual

Options Sets

An Options Set is a complete set of user selectable options. Options Sets are saved by name in the "FileList+ Options" file. The hierarchal sub-menu to next to this menu item will list all available Options Sets.

At program launch, if the Options file is found, then the default Options Set is loaded. Subsequently, you may select any other Options Set from the sub-menu next to this menu item. This will read that Options Set into memory, overwriting all current options. Overwritten options include the window sizes and positions if the "Include Windows" option was selected when this Options Set was saved. The last loaded Options Set is always indicated by the checkmark beside its name in the menu. When a List file is opened, its saved options override the current Match and File Filter options. Options in merged files are ignored. For further information, see the "**Options Saving**" section of this manual.

Save Options...

This menu item allows you to save all options to an Options Set. It performs the same function as pushing the Save... button in any options dialog. For further information, see the "**Options Saving**" section of this manual.

Delete Options...

This menu item allows you to delete an existing Options Set. For further information, see the "**Options Saving**" section of this manual.

Display Font Size

Select the font size to be used for list text on the screen.

Status Font Size

Select the font size to be used for the statistics at the top on the screen.

Printer Font

Select the font to be used for printing.

Printer Font Size

Select the font size to be used for printing.

Default Windows

Reset the size and position of each window to the last saved defaults.

Stack Windows

Resize each window and position them to overlap.

Tile Windows

Resize each window and position the volumes window immediately below the files window, using about 5/8 of the height of the screen for the files window and the rest for the volumes window.

Reset Options to Defaults

Resets all of the user options to the "factory" defaults, including general, display, match, scan, and filter options, with the sole exception of the window positions. Window positions will be reset to the last saved positions.

TIPS FOR USING FILELIST+

Here are a couple of suggestions for using **FileList+**. Several of them are referred to above.

- Use unique and descriptive names for each disk, and mark them clearly.
- Use consistent file and volume naming conventions, so you can identify the items easily.
- If you are interested in checking your executable files (applications, INITs etc.) for proper versions, enable the Get Version Information in the Scan Options... dialog.
- Set up and save your standard preferences and save them in the FileList+ Options file as the Default Options, then save your less standard preferences in other Options Sets.
- If you are a "keyboard" type person more than a "mouse" type person, check out all the keyboard shortcuts in the documentation. Most commonly used operations may be performed with keys.
- If FileList+ ever acts erratically, move the FileList+ Options file out of the System Folder or the Preferences folder and try again. FileList+ should warn you it couldn't find the options file if you move it correctly.

COMPATIBILITY

Just a couple of known incompatibilities exist:

In CE Softwares QuicKeys™ Version 1.2 you will bomb out of **FileList+** if you attempt to define a program specific QuicKey. This problem existed in FileList 1.4 also. Version 2.1 of QuicKeys does not seem to have this problem.

Another bug was discovered in AlarmsClock version 2.0 from Now Utilities. It seems this INIT expects the System heap to never be compacted. During list conversion, some System heap is used temporarily. In the process of obtaining this memory allocation, resources may have to be purged. AlarmsClock apparently never checks to see if the resources are still there, as Inside Mac says it should. AlarmsClock Version 3.0 fixes this problem.

Suitcase II versions prior to 1.2.11 will cause FileList+ to bomb due to memory problems with drawing the font menus, I suspect.

When using a printer driver that uses a lot of memory, such as the HP DeskWriter, you may need to allocate more memory to the application heap. To do this, select the Options menu with the Option key down and select the General Options... menu item. Set the Heap Size variable to at least 200K, then save and quit **FileList+**. The next time you launch **FileList+** it will have this configuration. Note that this parameter is saved in the FileList+ Options file, not the application.

Change History

Following is a detailed history of the most recent **FileList+** updates. For history of previous versions, see the separate FileList+ Revision History document.

New to version 1.0b21 of FileList+

- **NEW FUNCTION: Options Sets**
Options Sets are user configurations that are independently named and saved. These sets can be loaded by selecting them from the Options Sets menu item under the Options menu. Options Sets can be renamed, deleted, and created. They are saved in the FileList+ Options file. Options Sets may be loaded without losing any list data.
- **CHANGED** how options file saving is performed. All options are now saved to the options file found when searching 1) application folder 2) current preferences folder, or 3) current system folder clicking on any Save... button (were just "Save") will produce the Save Options dialog
- **FIXED BUG** with Printing stopping after first page when match data was current
- **ADDED** support for more than 32K records, up to 1 terabyte of data.
- **ADDED** new options to delete empty folders during Scan, and when deleting files
- **IMPROVED** Scan Folder to allow multiple scans of folders on same volume
- **ADDED** progress indicator and CANCEL button to Save Text progress dialog
- **IMPROVED** both match functions to gain speed (about 25% for Custom Match, 10-15% for Compare)
- **IMPROVED** search and sort speeds 40-50%, especially text sorting and sort by match index (65%!)
- added commas to size displays when sizes shown in K bytes
- increased size of size fields to accommodate up to 9 gigabyte disks and 999 M byte files
volumes fields were 8 in table, now 9
files field was 6 in table, now 8
- made name, version and all size fields automatic sizing. Field lengths will change to accommodate longest name in current list
- fixed bug where resort being performed after each of multiple volumes is deleted
- fixed bug where modify time of Volume list was truncated one character
- made match field auto-display like version field, as well as size of size & version fields
- indicated options in Scan and Save Text progress dialogs are now dimmed, indicating they cannot be changed
- fixed bug in Add Folder - when replace volumes with same name is selected, it wasn't working
- improved Scan Folder to not open archives accept inside folder of interest - makes it faster
- fixed bug that would ask you if you wanted to delete files from each dismounted volume when deleting file(s) from any volume
- fixed bug with ejecting volumes with Desktop Manager INIT active - NOTE: trashed file (under Sys 6) are returned to their original location unless trash is emptied before FileList+ ejects them
- added key commands for Scan Volumes window Scan Options button and Eject checkbox
- added option to hide the Time data in the Modify and Create Date/Time fields
use command-T to toggle display of time
option added to Display Options dialog
default is to display times
- **CHANGED** handling of default windows (Options Set defaults)
default windows are loaded at program launch, from the options file default options set
current window positions and size are saved when Save Options is performed if Include Windows is selected
default windows are set if Options Set is made the new default options and Include Windows option selected
default windows may be reselected by selecting Set Windows to Default menu item under Options menu
- added All button to Display Options that enables display of all fields (same as cmd-a)
- added Reset buttons to Display and Filter Options dialogs
sets options in this dialog to the program defaults (not the Options file defaults)
Cancel will ignore all changes made in this dialog
- in Display Options, hitting Cancel after performing an Apply will now reset Display options back to previous values
- fixed bug with "Options file not found" error dialog being displayed off the screen, waiting for an enter key (looked like the program was locked or something!)
- fixed minor bug where Sort menu not updated properly after sort was cleared (diamond left behind)

FileList+ User's Manual

- change - when a record or file is deleted, the cursor will return to the next file not deleted
- many other minor bug fixes
 - limited to either requiring all scans of one volume to be consecutive, or renaming volume for non consecutive scans
- added key command for Scan Folder "~" (shift-`)
- added warning to File Filter dialog when no file types are selected. This would not select ANY files
- changed Custom Match function when Ignore Names of Executables set, don't qualify files with Bundle bit as executable, use types only
- added new item to end of second line of statistics - shows time to perform last sort, scan, match or save text
- improved estimated required Application size when file is too large to be read in
- resort is now only performed when a match function is performed if the list was previously unsorted or sorted by match flags or match index. If match is cancelled, NO resort is performed
- fixed bug that would offset the field text and header during match functions
- fixed bug with Rename Volume dialog. Would accept a name if return/enter key pressed when name had not been changed. On scan or merge, this resulted in (illegal) duplicate volume names
- now saves status of "Ignore Names of Executables" Match Prefs option in the List File
- fixed bug where Compare Versions would skip files that did not match the volume criteria when One Match per File was enabled. Ex. matching files A B C & D where A & D on same volume and volume criteria was set to Same Volumes. Compare Versions would match A & B, then disregard because volume criteria not set, then stop searching for more matches, missing the A & D match
- started counting matched files and bytes in CountFlags, whenever list is changed
- added command key for Custom Match menu item - command-K (as in Kustom)
- made Select Files Special same as other "Special" menu items, i.e. w/Only User Selected Files this allows one reduce a list by culling the selected file records
- fixed bug where if one file had file records deleted, then was overwritten by another file without saving first, flag that indicated records had been deleted was incorrectly set, causing compact to be performed, and the Undelete menu item to be active incorrectly.
- fixed bug with match functions bumping match index for all •m files
 - Only limit is available memory for the application
- fixed menus to be entirely disabled while an operation is in progress (like matching, etc.)
 - delete during scan will not remove nested empty folders (only the deepest folder)
 - default for delete empty folders Scan Option is off
 - default for delete emptied folders during file delete is ON
- added list of files to be deleted when Delete Files from Disk warning is displayed